



Olympus RAW File Import Plug-in Instructions

RAW File Import Plug-in Utility for Olympus Digital Cameras

© Copyright 2000 Olympus Optical Co., Ltd. No part of this material may be photocopied, reproduced, or translated into another language without prior written consent of Olympus Optical Co., Ltd. This software application and these instructions may be updated for improvements without prior notice.

- Windows is a registered trademark of the Microsoft Corporation.
- Photoshop is a registered trade mark of the Adobe Systems Inc.
- Macintosh and Apple are trademarks of Apple Computer, Inc.
- All other product and company names are registered trademarks of their respective companies.

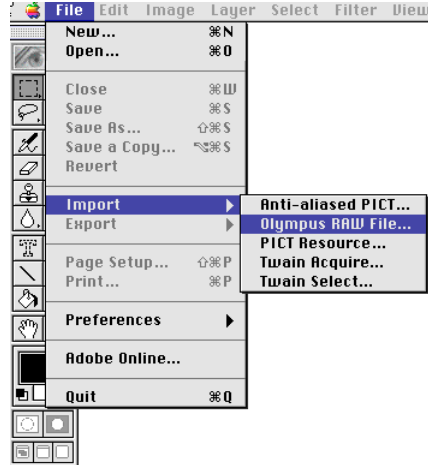
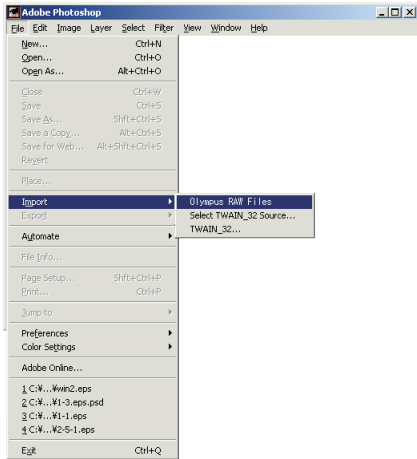
This software application is a plug-in intended for use with Adobe® Photoshop 5.0 (or higher) to import and process RGB color photos captured with an Olympus digital camera in the RAW data format (with the file extension *.orf).

How to Use This Plug-in

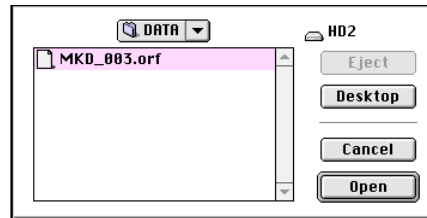
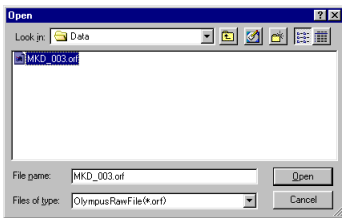
- 1) Start PhotoShop 5.0 (or higher).
- 2) From the File menu, select Import, and then select Olympus RAW File.

Note

The sample screenshots on the left are for Windows and those on the right for Macintosh.



The Import File Settings dialog box opens.



- 3) Click the name of the photo file (File Name.orf) in the list that you want to import, and then click the Open button.

The Olympus RAW File plug-in application window opens.



4) Click the appropriate button to process the Olympus RAW photo.

RGB Conversion

Click this button for only RGB color adjustment without affecting the white balance or color adjustment.

RGB, WB and Color Adjustment

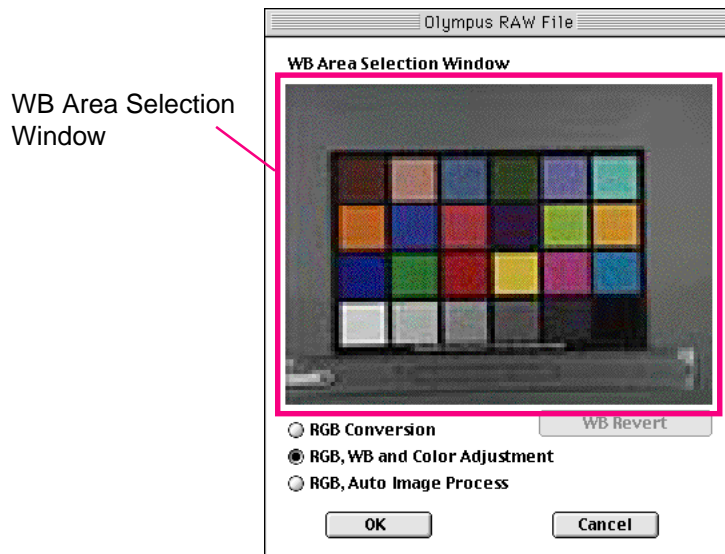
Click this button for RGB color conversion with white balance and color adjustment.

RGB, Auto Image Process

Click this button for RGB color adjustment and for all the adjustment features applied to the RAW image with the camera's (white balance, color adjustment, sharpness, contrast, and so on).

5) If you click and select RGB, WB and Color Adjustment or RGB, Auto Image Process to adjust white balance, you can select the portion of the image where you can set white as the base color. In the "WB Area Selection Window", click the portion of the photograph that you want to select as the base color.

The selected area of the image is adjusted using white as the base color.



If you want to cancel a setting, click the WB Revert button.

If you do not select any area for white balance adjustment, then the white balance is adjusted automatically with the original camera and photo data.

If you click RGB Conversion, selection in the "WB Area Selection Window" is not possible. White balance adjustment is not conducted in this mode.

6) Click the OK button.

The Olympus RAW File plug-in application window closes, and the adjusted photograph appears in the PhotoShop window.