

## Downloading Images and Movies from a Digital Camera to OLYMPUS Master 2

### Overview

This article describes how to download image and movie files from an Olympus digital camera<sup>1</sup> to the OLYMPUS Master 2 application.

This software makes it easy to organize, edit and share digital images and movies. It is bundled with all Olympus digital cameras released on or after February 2007, and it is also available as a free download for use with older Olympus digital cameras. Click here to request a free download of the OLYMPUS Master 2 software.

### Setting Up and Connecting the Camera

Olympus digital cameras are designed to use a single USB cable to connect to a variety of devices, such as computers and printers. As a result, when the camera is connected to a device, the camera must be told which protocol to use to communicate with that device. Depending on the model, the menu function that controls this configuration is called either **USB Mode** or **PC Mode**.

To prepare the camera for file transfer, do the following:

1. Turn off the camera.
2. Connect the camera to the computer using the USB cable bundled with the camera. If the camera does not immediately power on, turn the camera power on.
3. A selection menu will be displayed on the LCD.<sup>2</sup> For Olympus digital SLR cameras, select **STORAGE**. For non-SLR digital cameras, select **PC**.
4. Press the [OK] button to continue.

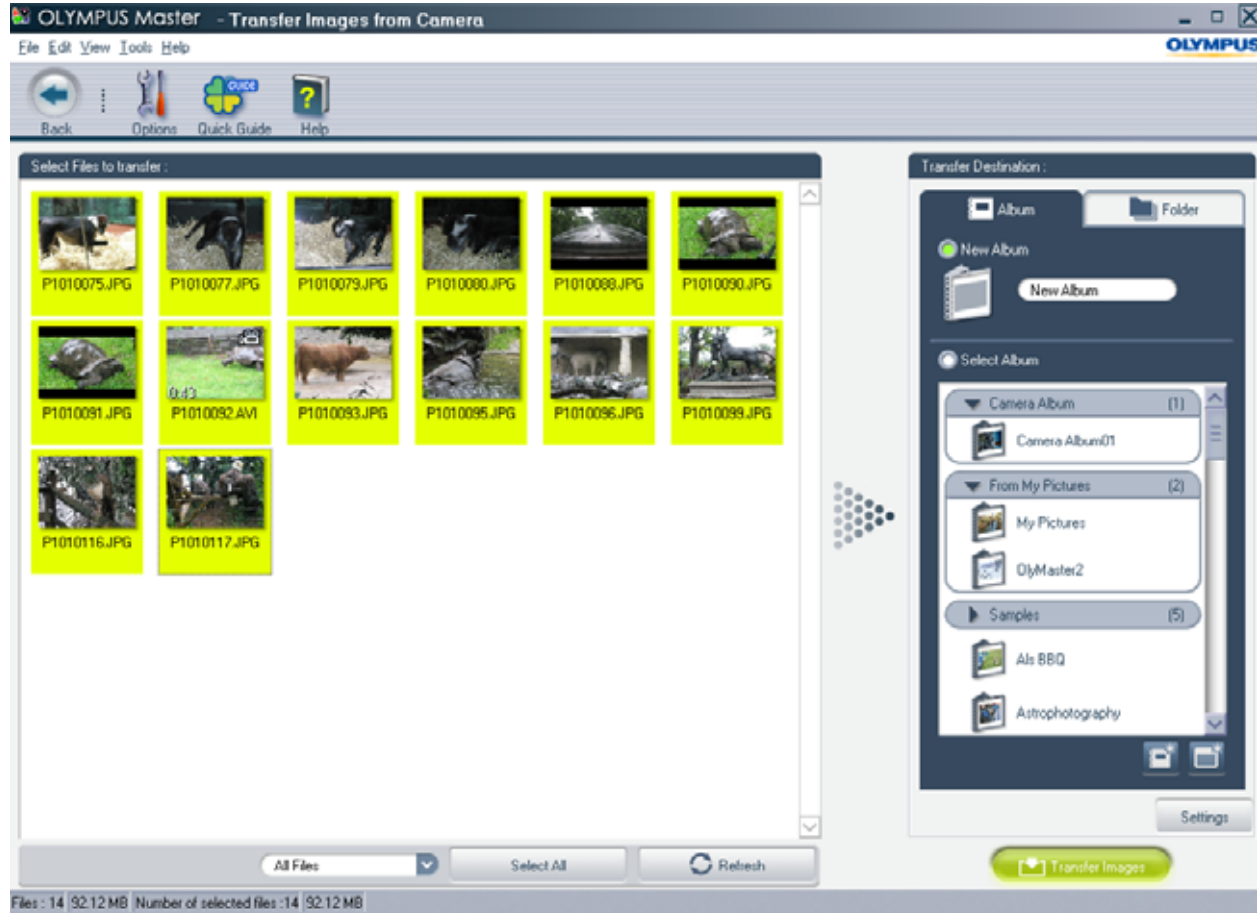
### Selecting Images and Movies to Transfer

Once the camera and computer are connected, you will be able to select the images and movies you wish to download to OLYMPUS Master 2. Launch the application on the computer. Click once on the **Transfer** icon in the Toolbar, and then select **From Camera**, as shown:



The **Transfer Images from Camera** window will open and display thumbnail images of the images and movies in the camera. Initially, all files in the camera will be selected for download. To select a single file, click on it. To select a sequence of images and movies, click on the first file in the group, then hold down the **Shift** key while clicking on the last file in the group. Multiple, nonsequential files can be selected by holding down the **Ctrl** key while clicking on each file. To re-select all files, click on the **Select All** button at the bottom of the window.

Selected images will have a green border.



If you choose to transfer only some of the files in the camera, you may transfer the remaining files later during the same or a future session of OLYMPUS Master 2. If you do not delete the files on the camera in between sessions, then you may take advantage of some additional controls at the bottom of the window.

The drop menu to the left of the **Select All** button lets you choose whether to view **All Files** on the camera or only those that were **Not Transferred Yet**. The **Refresh** button is used to refresh the thumbnail display after transferring files to a computer: Click it, and any files that have been transferred to the computer will be grayed out and partially hidden by this icon:



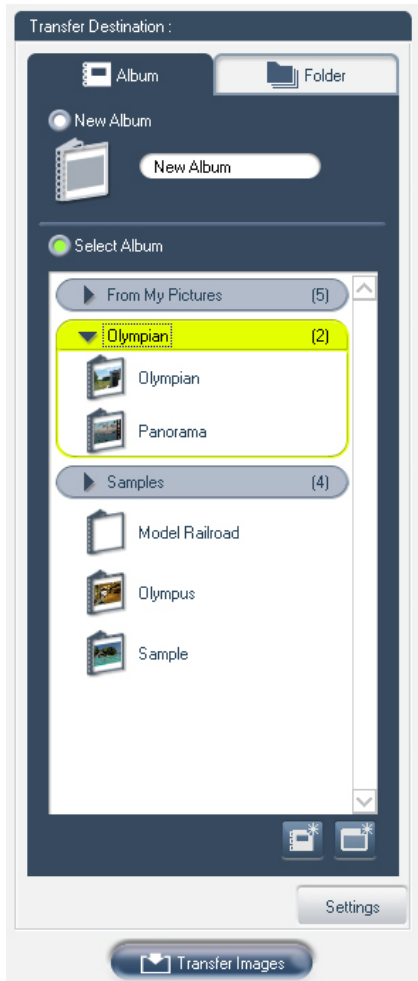
The **Refresh** button makes it is easy to transfer subsets of files into separate Transfer Destinations.

## Selecting the Transfer Destination

When transferring images and movies from the camera to OLYMPUS Master 2, you have two options for the transfer destination: **Album** or **Folder**.

### Downloading to an Album

The **Album** tab in the **Transfer Destination:** window is used to transfer files to albums. Albums are collections of images and movies that are grouped together by the user, typically according to some common theme. Albums can be organized into **Groups**.



When the **New Album** radio button is selected (as it is by default), files can be transferred into a new album with a customized name. For example, if you were downloading vacation pictures, you could type “Vacation” into the text field, replacing the default term “New Album.” When the pictures were later transferred, they would be stored in the **Vacation** album, which would be added to the list of albums at the bottom of the **Transfer Destination:** window.

The **Select Album** radio button is used to transfer files to previously created albums. Select the radio button, and then click on an album. Files will be transferred to that album.

The Create New Album button, shown at right, lets you create a new album and automatically select it as the Transfer Destination. Click the button. In the resulting dialog, enter a name for the album. If you want to include the album in a Group, enter the name of a Group. Otherwise, select **No Group**. Click **OK** to create the Album.



The Create Group button, shown at right, lets you define a new Group. Click the button. In the resulting dialog, enter a name for the Group and then click **OK**.



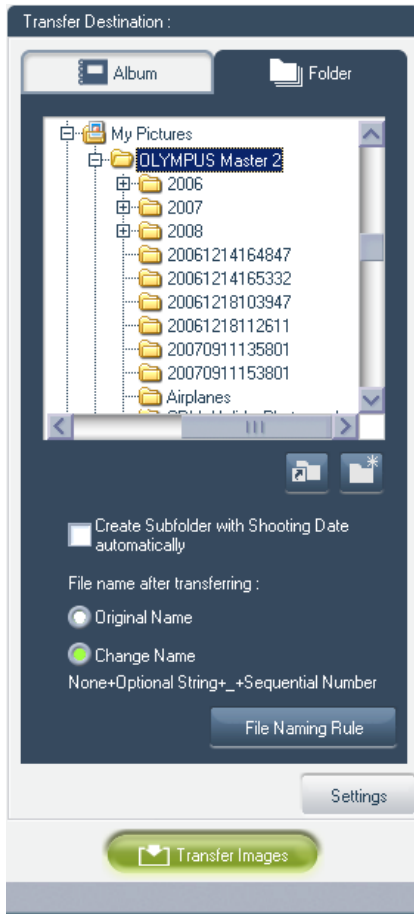
When an album is selected, the colored border around files highlighted in the **Transfer Images from Camera** window will turn to gray and the album will be highlighted in green.

Once the album has been selected, click the **Transfer Images** button to transfer the highlighted images and movies from the camera to the album. The digital files will be saved to a default location on the computer’s hard disk drive.



The **Settings** button at the bottom of the **Transfer Destination:** window can be used to view the default location. It can also be used to set configurable download options such as the file naming convention and whether or not to delete the files on the camera after transfer is complete. See “**Customizing the Download Settings**” below for details.

## Downloading to a Folder

The **Folder** tab in the **Transfer Destination** window is used to transfer images and movies to a specified destination folder on the computer.



The destination folder can be selected in several ways:

- It can be selected by highlighting a destination folder in the computer's folder tree, which is reproduced at the top of the **Folder** tab.
- The **Refer Shortcut** button, shown at right, can be used to select a preset destination folder, such as the **Desktop**, the **My Documents** folder or the **My Pictures** folder as the destination folder. 
- A new destination folder can be created using the **Create New Folder** button, shown at right. 
- Checking the **Create Subfolder with Shooting Date automatically** will create an additional folder based on the shooting date for use by the **Timeline** or **Calendar** options.

The **Folder** tab also offers options for specifying how the transferred files are to be named on the computer. See "**Customizing the Download Settings**" below for details.

Once the transfer parameters have been set, click on the **Transfer Images** button to download the selected files to the destination folder.

## Customizing the Download Settings

The **Settings** button opens a dialog box that displays the default download settings and allows them to be customized. Some of the options are also displayed on the **Folder** tab. Changing a setting in either location affects the download configuration regardless of whether the transfer destination is an **Album** or a **Folder**.

### Transfer Destination

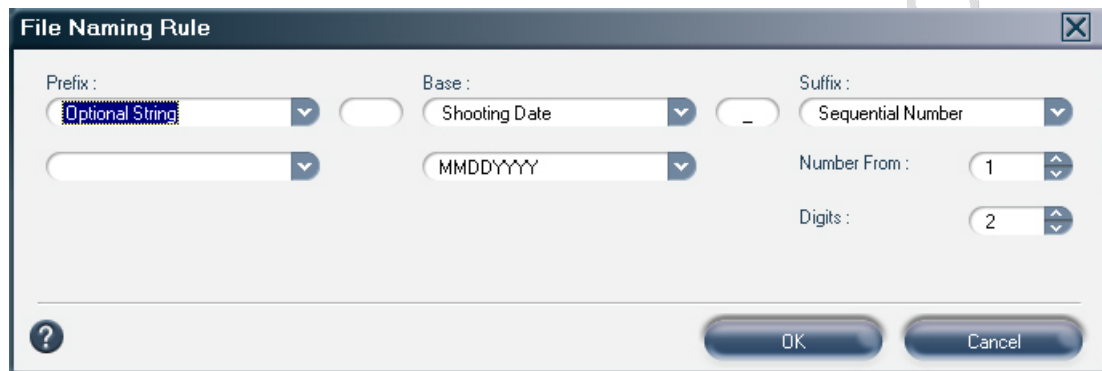
When downloading to an Album, the parent destination folder is fixed; however, subfolders may optionally be created to help organize the files. Subfolders can be automatically assigned using either the files' shooting date or the date and time the files were transferred to the computer. It is also possible to specify a custom name for the subfolder.

When downloading to a Folder, the option to automatically assign a subfolder name based on the time and date of transfer is not available, although any name can be manually assigned using the Create New Folder option on the **Folder** tab.

## File Name After Transferring

OLYMPUS Master 2 offers options for specifying how the transferred files are to be named once they arrive on the computer:

- **Original Name:** This option retains the original file names assigned by the camera.
- **Change Name:** This option enables customization of the file naming structure, which facilitates archiving images and movies by project, subject matter or other user-defined criteria. To change file names, click on the **Change Name** radio button and then the **File Naming Rule** button. The **File Naming Rule** dialog box will be displayed. Change any settings as desired, and then click **OK** to save the changes.



When downloading to an Album, the file naming options are accessed via the **Settings** button. When downloading to a Folder, they are accessed directly from the **Folder** tab.

### Rule When the Same File Name Exists

In the event that the camera contains a file with the same name as a file already stored on the computer, OLYMPUS Master 2 can be configured to automatically add a sequential number to the end of the file's name upon transfer or to prompt you for permission to overwrite the file.

### Delete Files in Camera (Media) automatically after Transfer

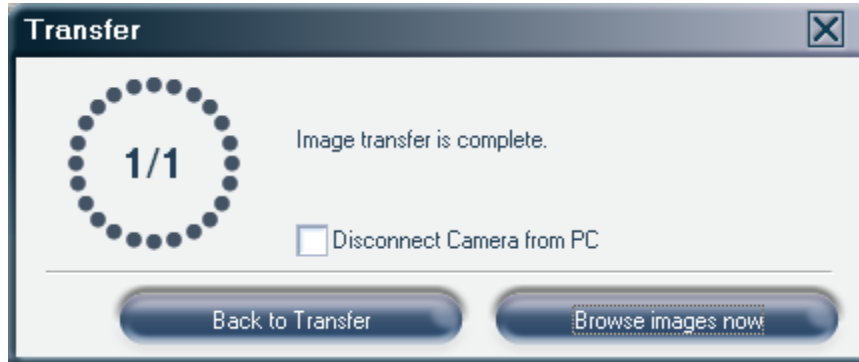
Checking this box instructs OLYMPUS Master 2 to delete the original files on the camera after successful transfer, eliminating the need to **ERASE** images in-camera later.

### Downloading Files from the Camera to OLYMPUS Master 2

To download images from an Olympus digital camera to OLYMPUS Master 2, do the following:

1. Connect the camera to the computer following the procedures in “**Setting Up and Connecting the Camera**” above.
2. Launch OLYMPUS Master 2, click the **Transfer** icon in the Toolbar and select **From Camera**.
3. Select the images and movies to transfer.
4. Select a destination Album or Folder and configure any download options.
5. Click the **Transfer Images** button. A progress dialog will be displayed to help you track how much time is required to download the selected images. Do not disconnect the camera from the computer during transfer. This may cause the application to function incorrectly.

6. When the transfer is complete, the following dialog will be displayed:



Click **Back to Transfer** if you wish to download more files to OLYMPUS Master 2.

Click **Browse images now** to return to end file transfer for this session and return to OLYMPUS Master 2's **Browse** window.

If you are finished transferring images and want to disconnect the camera from the computer, check the **Disconnect Camera from PC** box before clicking **Browse images now**. OLYMPUS Master 2 will remain open after the connection between the camera and computer is terminated.

### **Notes:**

<sup>1</sup> This article concerns Olympus digital cameras that feature Auto-Connect<sup>®</sup> USB technology. This technology, also called "Mass Storage USB" or "Storage Class USB," allows the cameras to automatically communicate with compatible operating systems by mounting as a hard disk drive without the need for additional drivers or software. Connecting this way makes it possible to drag and drop images from the camera to any drive or folder on the computer.

Auto-Connect USB is compatible with Windows VISTA<sup>™</sup>, Windows<sup>®</sup> ME, Windows 2000, Windows XP, Macintosh OS 9 to 9.21 and Macintosh OS X. Windows 98 SE and Macintosh OS 8.6 will also support this functionality but require updated drivers or extensions.

Olympus digital cameras introduced prior to 2000 connect to computers via either a standard USB port or a serial port. Olympus standard USB digital cameras require installation of a special driver before they can be recognized by Windows operating systems. The drivers can be downloaded for free. Click [here](#) to download the driver for Windows Vista/XP/2000/ME or [here](#) to download the driver for Windows 98SE. Olympus serial port digital cameras can connect to Windows computers but require CAMEDIA Master software v. 2.51 or later to download images.

<sup>2</sup> The factory default setting for **USB Mode/PC Mode** on Olympus' digital SLR cameras is **AUTO**. In this mode, the camera will display a selection menu after it is connected to a computer. However, if the setting is changed, the menu may not be displayed. When the mode is set to **STORAGE**, the connection will be made automatically. When the mode is set to anything other than **AUTO** or **STORAGE**, the LCD screen will be dark and files cannot be transferred to the computer. In this case, disconnect the camera, set the mode to **AUTO** or **STORAGE**, and then repeat the operation.