

OLYMPUS®

Quick Start Guide

FE-130/X-720/X-740

FE-140/X-725

Start Here

For more information, please refer to the Basic & Advanced Manuals or visit: www.olympusamerica.com/support

OLYMPUS IMAGING AMERICA INC.

BEFORE YOU BEGIN

Gather these items (box contents)



Digital Camera



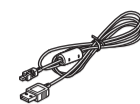
Strap



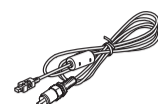
AA Batteries (two)



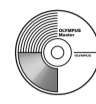
Camera insert*



USB Cable (light gray)



Video Cable (black)



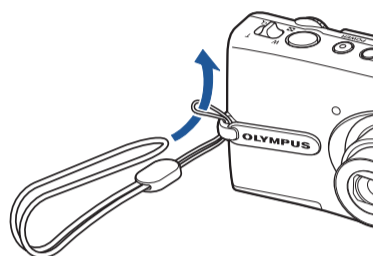
OLYMPUS Master software CD-ROM

Items not shown: Advanced Manual (CD-ROM), Basic Manual, warranty card. Contents may vary depending on purchase location.
* Use it when connecting the camera to an optional printer which is compatible to the ImageLink print system.

The images of the LCD screen and illustrations of the camera used in this manual may differ from the actual product. For this manual, all of the images are based on the FE-130/X-720/X-740 model.

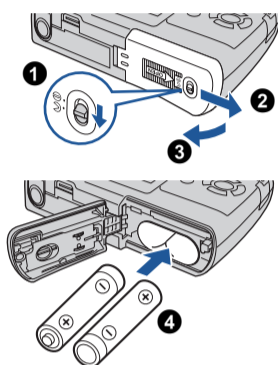
1 GET STARTED

a. Attach the strap



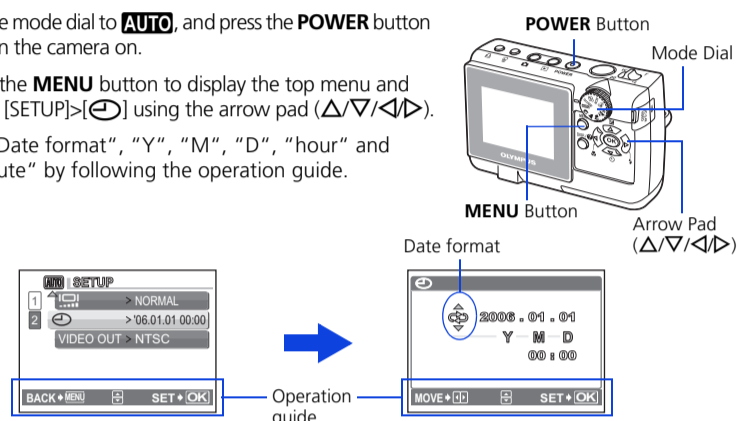
- Pull the strap tight so that it does not come loose.

b. Insert the batteries



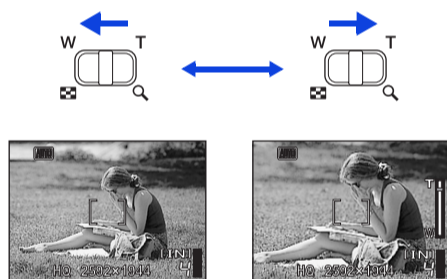
c. Set the date and time

- 1 Set the mode dial to **AUTO**, and press the **POWER** button to turn the camera on.
- 2 Press the **MENU** button to display the top menu and select [SETUP]>[] using the arrow pad (Δ/▽/◀/▶).
- 3 Set "Date format", "Y", "M", "D", "hour" and "minute" by following the operation guide.



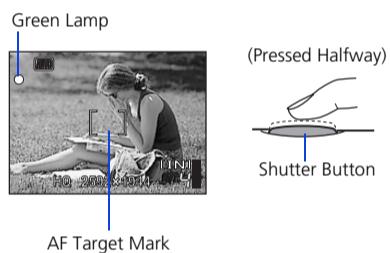
2 TAKE A PICTURE

a. Zoom



b. Focus

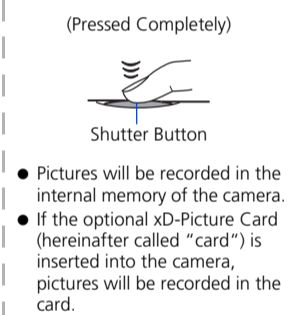
- 1 Using the monitor, place the AF target mark over your subject.



- 2 Press and hold the shutter button halfway to lock the focus.
 - The green lamp indicates the focus is locked.

c. Take the picture

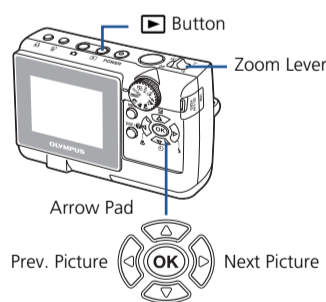
- 1 Press the shutter button completely to take the picture.



3 REVIEW OR ERASE A PICTURE

a. Press the [] button

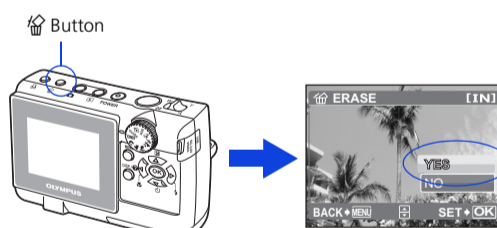
- The last picture taken will be displayed.



b. Take a closer look

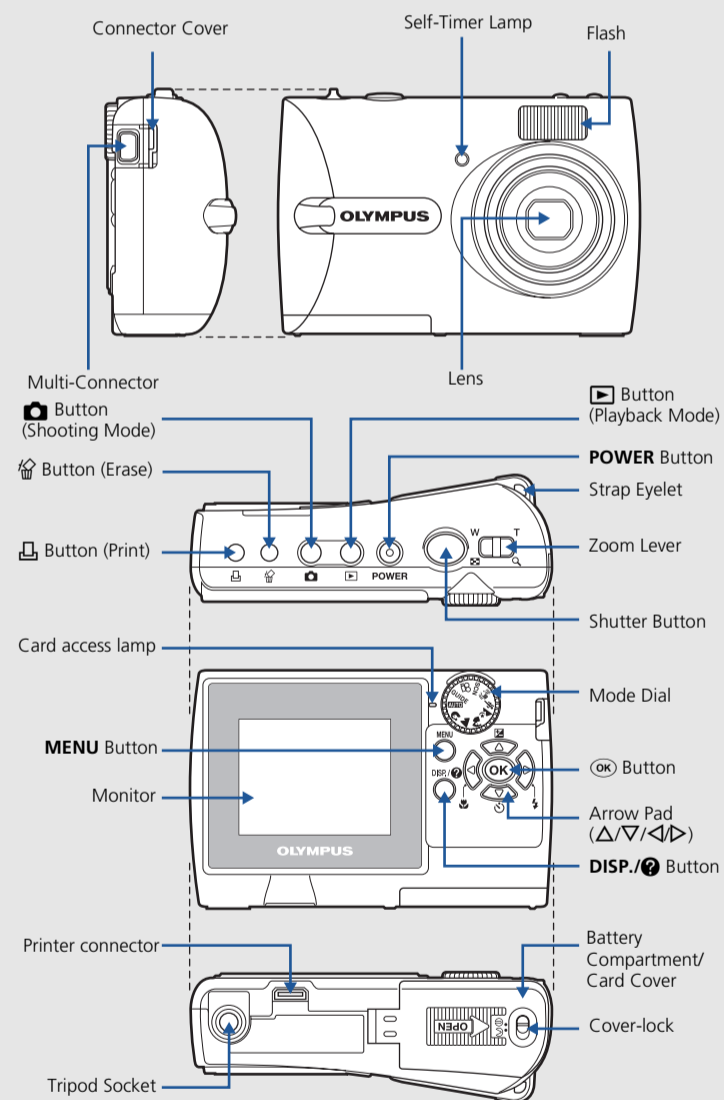
- Pull the lever toward **T** to enlarge the picture up to 10 times the original size, or push the lever toward **W** to reduce the size.
 - Press **OK** to return to the original size.
 - Press Δ/▽/◀/▶ to scroll around.
- Press the [] button to return to shooting mode.

c. To erase a picture



- 1 Display the picture you want to erase.
- 2 Press the [] button.
- 3 Select [YES], and press **OK**.
 - The picture is permanently erased.

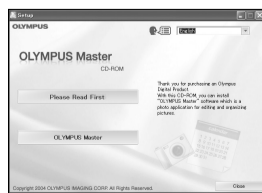
CAMERA DIAGRAM



4 TRANSFER IMAGES

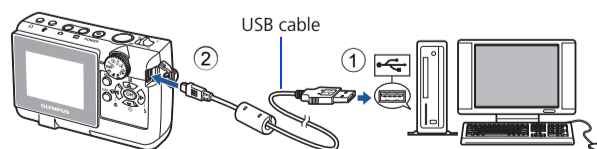
a. Install the software

- 1 Insert the OLYMPUS Master CD-ROM.
- 2 **Windows:** Click the "OLYMPUS Master" button.
Macintosh: Double-click the "Installer" icon.
- 3 Simply follow the on-screen instructions.
 - Remember to register your camera when you install OLYMPUS Master or visit: www.olympusamerica.com/prodreg



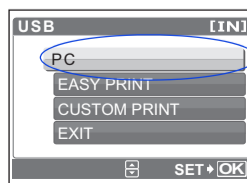
b. Connect the camera to the computer

- 1 Connect the camera and computer using the USB cable (provided).
 - The monitor will turn on automatically.



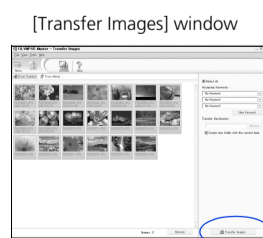
- 2 Select [PC] on the monitor, and press **OK**.

- Your PC will now recognize your camera as a removable storage drive.



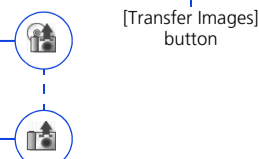
c. Transfer images to the computer

- 1 With the camera now connected, open OLYMPUS Master.
 - The [Transfer Images] window is displayed.
- 2 Select the images you want to transfer, and click the [Transfer Images] button.



If the [Transfer Images] window is not displayed automatically:

- a. Click the "Transfer Images" icon on the OLYMPUS Master main menu.
- b. Click the "From Camera" icon.



ANTES DE COMEÇAR

Reúna estes itens (conteúdo da caixa)



Câmara Digital



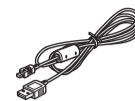
Correia



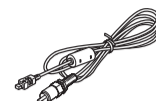
Pilhas AA (duas)



Acoplador da câmara*



Cabo USB (cinzento-claro)



Cabo de vídeo (preto)



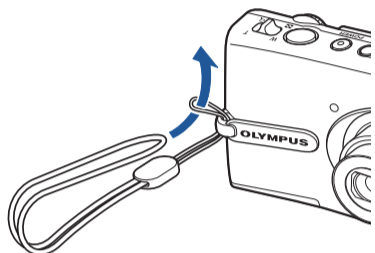
CD-ROM do software OLYMPUS Master

Itens não ilustrados: Manual Avançado (CD-ROM), Manual Básico, Cartão de Garantia. O conteúdo pode variar consoante o local de aquisição.
*Use-o ao conectar a câmara a uma impressora opcional que seja compatível ao sistema de impressão ImageLink.

As imagens do ecrã LCD e as ilustrações da câmara utilizadas neste manual podem diferir do produto real. Neste manual, todas as imagens têm como base o modelo FE-130/X-720/X-740.

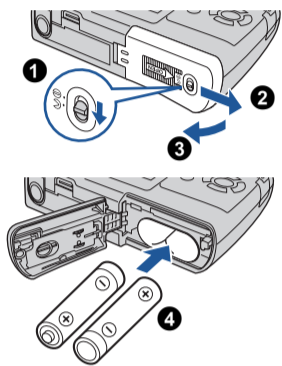
1 INICIAÇÃO

a. Colocar a correia



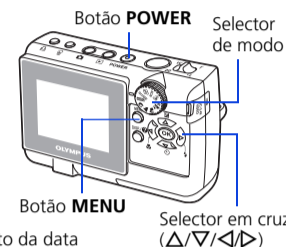
● Puxar bem a correia de modo a que não fique solta.

b. Inserir as pilhas



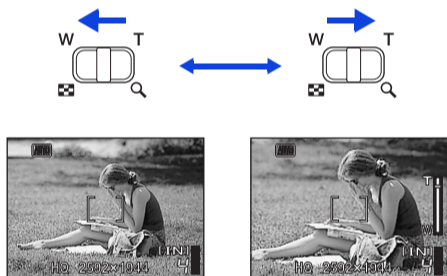
c. Definir a data e hora

- 1 Coloque o seletor de modo em **AUTO** e pressione o botão **POWER** da câmara na posição ligado.
- 2 Pressione o botão **MENU** para visualizar o menu principal e seleccione [CONFIG.]>[] usando o selector em cruz (Δ/∇/◀/▶).
- 3 Configure "formato da data", "A", "M", "D", "hora" e "minuto" seguindo o guia de funcionamento.



2 FOTOGRAFAR

a. Zoom



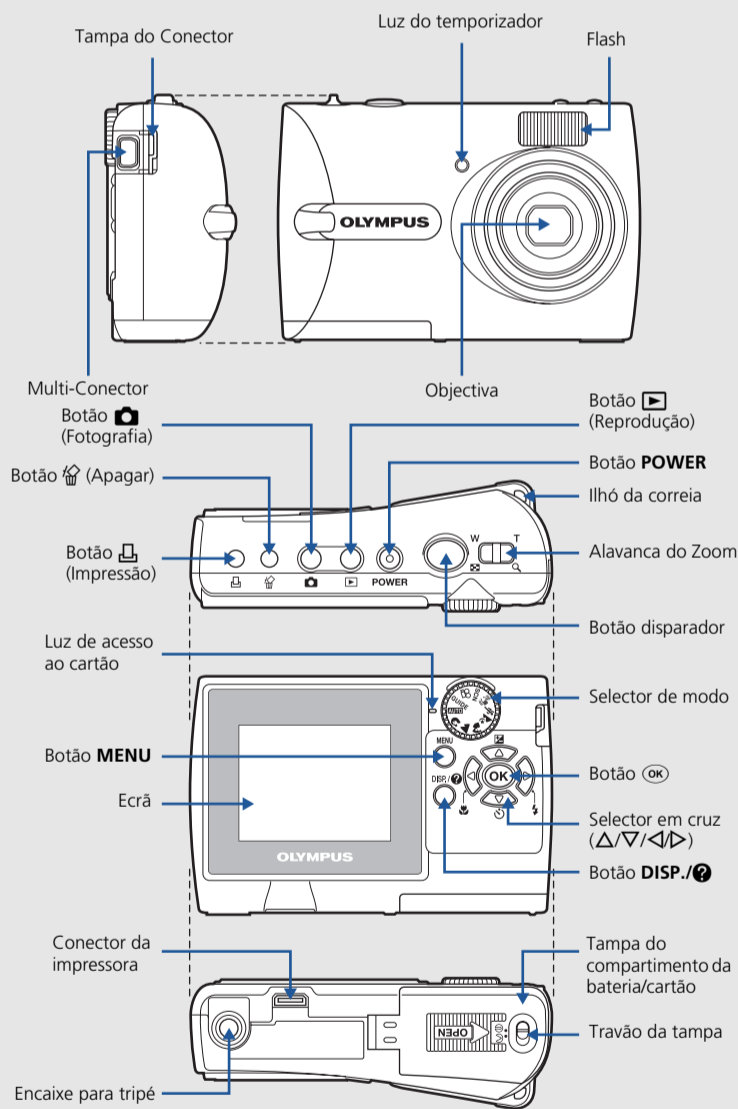
b. Focar

- 1 Utilizando o ecrã, colocar a marca AF sobre o tema fotográfico.
Luz verde (Premido até meio) Botão disparador
Marca AF
- 2 Pressione o botão disparador até meio e manter nessa posição para bloquear a focagem.
● A luz verde indica que a focagem está bloqueada.

c. Fotografar

- 1 Premir totalmente o botão disparador para fotografar.
(Totalmente premido) Botão disparador
● As fotos serão gravadas na memória interna da câmara.
● Se o cartão opcional xD-Picture Card (de agora em diante denominado "cartão") estiver inserido na câmara, as fotos serão armazenadas no cartão.

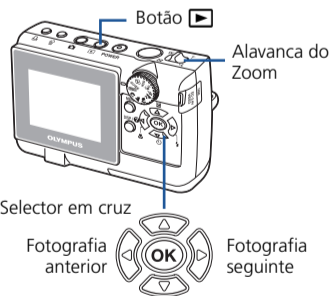
DIAGRAMA DA CÂMARA



3 REVER OU APAGAR UMA FOTOGRAFIA

a. Pressione o botão

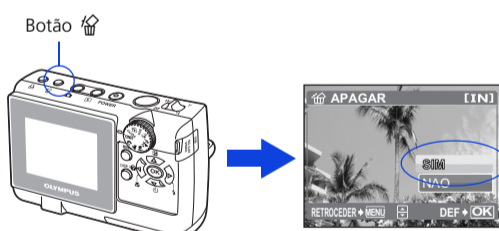
- A última imagem fotografada será visualizada.



b. Ver mais de perto

- Pressione a alavanca na direcção **T** para aumentar a imagem até 10 vezes o tamanho original, ou pressione a alavanca na direcção **W** para reduzir o tamanho.
 - Pressione **OK** para voltar ao normal.
 - Pressione Δ/∇/◀/▶ para percorrer a imagem.
- Pressione o botão **REPRODUÇÃO** para voltar ao modo fotografia.

c. Para apagar uma fotografia

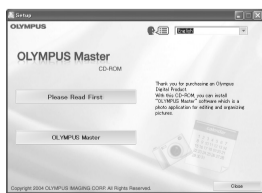


- 1 Visualizar a fotografia que pretende apagar.
- 2 Pressione o botão **APAGAR**.
- 3 Seleccionar [SIM] e pressione **OK**.
● A fotografia é eliminada permanentemente.

4 TRANSFERIR IMAGENS

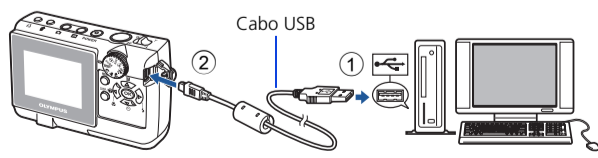
a. Instalar o software

- 1 Inserir o CD-ROM OLYMPUS Master.
- 2 **Windows:** Fazer clique no botão "OLYMPUS Master".
Macintosh: Fazer duplo clique no ícone "Installer".
- 3 Seguir simplesmente as instruções no ecrã.
● Lembre-se de registar sua câmara quando instalar OLYMPUS Master ou visitando: www.olympusamerica.com/prodreg

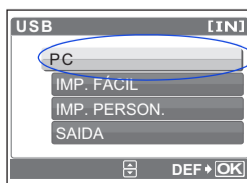


b. Ligar a câmara ao computador

- 1 Ligar a câmara ao computador usando o cabo USB (fornecido).
● O ecrã ligar-se-á automaticamente.



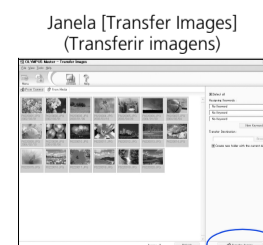
- 2 Seleccionar [PC] no ecrã e pressione **OK**.



- O PC reconhece agora a câmara como um disco amovível.

c. Transferir imagens para o computador

- 1 Com a câmara ligada, abrir o OLYMPUS Master.
● Surge a janela [Transfer Images] (Transferir imagens).
- 2 Seleccionar as imagens que pretende transferir e fazer clique no botão [Transfer Images] (Transferir imagens).



Se a janela [Transfer Images] (Transferir imagens) não surgir automaticamente:

- a. Fazer clique no ícone "Transfer Images" (Transferir imagens) no menu principal do OLYMPUS Master.
- b. Fazer clique no ícone "From Camera" (Da câmara).