
Olympus RAW File Import Plug-in

Instructions

**RAW File Import Plug-in Utility
for Olympus Digital Cameras**

● Welcome!

Thank you for using this Olympus product.

Please read these instructions carefully in order to get the best results from this product.

● Note

- The contents of this software and this manual may not be reproduced in whole or in part except for personal use. It may not be transferred without permission.
- Olympus can accept absolutely no responsibility in respect of losses suffered by the customer or a third party as a result of use of this software.
- While every care has been taken in the preparation of this manual, if you find any points which are unclear, errors, or omissions, please contact an authorized Olympus service center.
- This software is only guaranteed to operate in the same operating environment required for the specified Photoshop versions.
- This software supports Photoshop 6.0 and later.
- The software specification and the content of this manual are subject to change without notice. For the latest information, visit the Olympus web site at: <http://www.olympus.com>

©2004 OLYMPUS IMAGING CORP.

● Trademarks

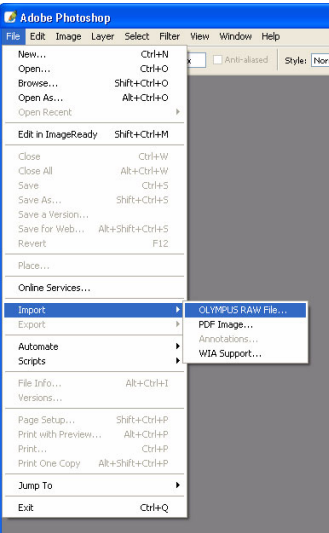
- Windows® is a registered trademark of Microsoft Corporation in the USA and other countries.
- Macintosh is a registered trademark of Apple Computer, Inc. in the USA and other countries.
- Adobe® and Adobe Photoshop® are trademarks of Adobe Systems Incorporated.
- Other company and product names appearing in this manual are trademarks or registered trademarks of their respective owners.

● Performing RAW Development Processing

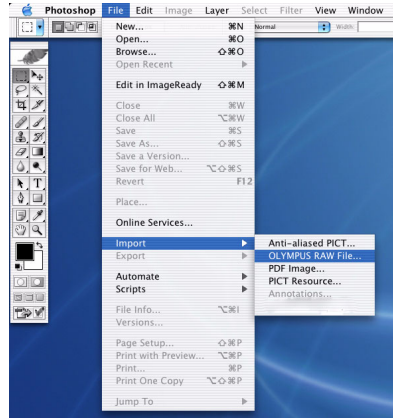
To perform RAW development processing using this software, follow the procedure below.

1 Start Photoshop.

2 From the [File] menu, select [Import], and then select [OLYMPUS RAW File...].

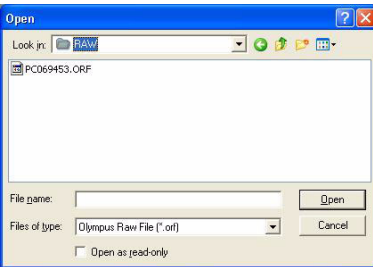


Windows screen

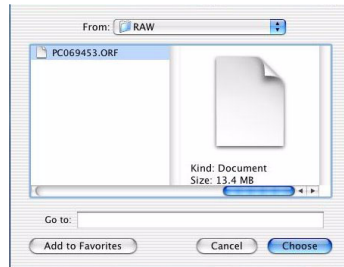


Macintosh screen

The dialog box to specify the file to be imported appears.



Windows screen

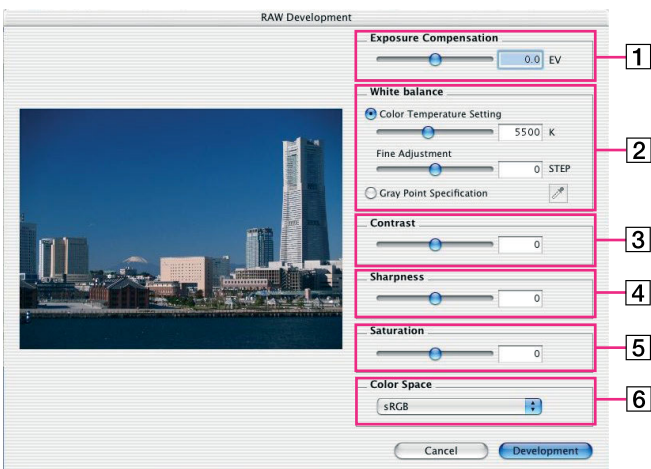


Macintosh screen

3 Click the name of the image file (File Name.orf) in the list that you want to import, and then click the Open or Choose button.

The [RAW Development] dialog box appears.

4 If desired, set the items in the RAW development setting area. For details about each item, refer to the table below.



● **Setting Items**

No.	Item	Description
1	Exposure Compensation	Adjusts the exposure of the image. You can manually adjust the exposure by dragging the slider to the left or right. The exposure can be adjusted from -2.0 to +2.0 in 0.1 EV increments. You can also directly input the value in the edit box.
2	White Balance	Adjusts the white balance of the image. You can select to adjust the Color Temperature Setting or the Gray Point Specification. Color Temperature Setting You can manually adjust the color temperature by dragging the slider to the left or right. The setting range is between 2000K and 10000K, in 100K increments. You can also directly input the value in the edit box. Fine Adjustment If you have selected the color temperature, you can manually perform fine adjustment of the color temperature by dragging the slider to the left or right. The setting range is from -10 to +10, in 1 step increments. You can also directly input the value in the edit box. Gray Point Specification Click the Eyedropper button to change the mouse cursor to the eyedropper tool. Click the desired point in the preview display area to specify a gray point.

No.	Item	Description
3	Contrast	Adjusts the contrast of the image. You can manually adjust the contrast by dragging the slider to the left or right. The setting range is from -5 to +5, in 1 step increments. You can also directly input the value in the edit box. The shooting settings are discarded.
4	Sharpness	Adjusts the sharpness of the image. You can manually adjust the sharpness by dragging the slider to the left or right. The setting range is from -5 to +5, in 1 step increments. You can also directly input the value in the edit box. The shooting settings are discarded.
5	Saturation	Adjusts the intensity of colors. You can manually adjust the saturation by dragging the slider to the left or right. The setting range is from -5 to +5, in 1 step increments. You can also directly input the value in the edit box. The shooting settings are discarded.
6	Color Space	Sets the color space of the image. Selects a setting method ([sRGB], [Adobe RGB], or [ProPhoto RGB]) from the pull-down list.

5 Click the [Development] button.

The [RAW Development] dialog box closes, and a Photoshop window with the converted image is displayed.

Technical Support

Contact for Inquiries Relating to This Software

OLYMPUS IMAGING CORP.

Shinjuku Monolith, 3-1 Nishi-Shinjuku 2-chome, Shinjuku-ku, Tokyo, Japan

OLYMPUS IMAGING AMERICA INC.

Two Corporate Center Drive, P.O. Box 9058, Melville, NY 11747-9058, U.S.A.
Tel. 631-844-5000

Technical Support (U.S.A.)

24/7 online automated help: <http://www.olympusamerica.com/support>

Phone customer support : Tel. 1-888-553-4448 (Toll-free)

Our Phone customer support is available from 8 am to 10 pm (Monday to Friday) ET

E-Mail: distec@olympus.com

Olympus software updates can be obtained at: <http://www.olympus.com/digital>

OLYMPUS EUROPA GMBH

Premises: Wendenstrasse 14-18, 20097 Hamburg, Germany

Tel : +49 40-23 77 3-0

Fax : +49 40-23 07 61

Goods delivery: Bredowstrasse 20, 22113 Hamburg, Germany

Letters: Postfach 10 49 08, 20034 Hamburg, Germany

European Technical Customer Support

Please visit our homepage <http://www.olympus-europa.com>

or call our TOLL FREE NUMBER* : 00800 - 67 10 83 00

for Austria, Belgium, Denmark, Finland, France, Germany, Italy, Luxemburg, Netherlands, Norway,
Portugal, Spain, Sweden, Switzerland, United Kingdom

* Please note some (mobile) phone services/provider do not permit access or request an additional prefix
to +800 numbers.

For all not listed European Countries and in case that you can't get connected to the above mentioned number
please make use of the following

CHARGED NUMBERS: +49 180 5 - 67 10 83 or +49 40 - 237 73 899

Our Technical Customer Support is available from 9 am to 6 pm MET (Monday to Friday)

OLYMPUS[®]

A thick, yellow, horizontal swoosh underline that is slightly wider at the ends and tapers in the middle, positioned directly beneath the word "OLYMPUS".