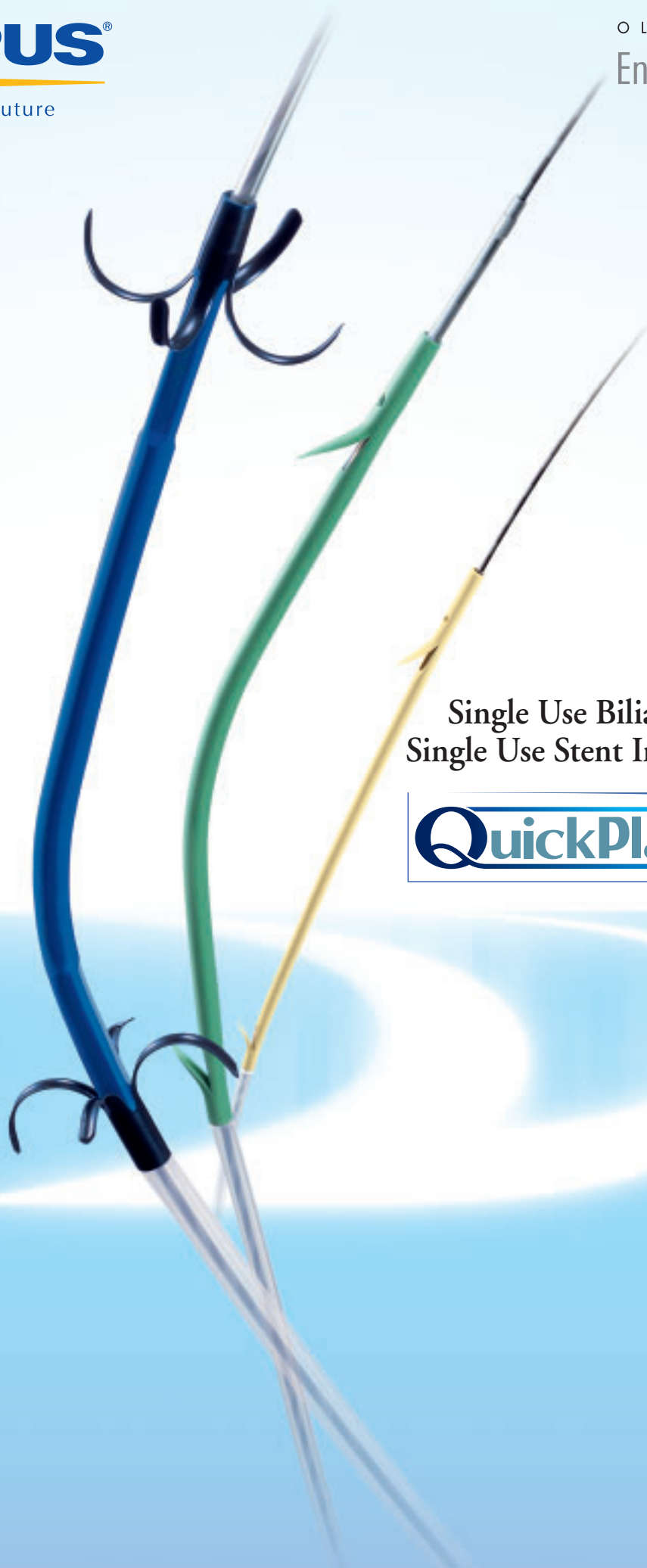


OLYMPUS[®]

Your Vision, Our Future

OLYMPUS

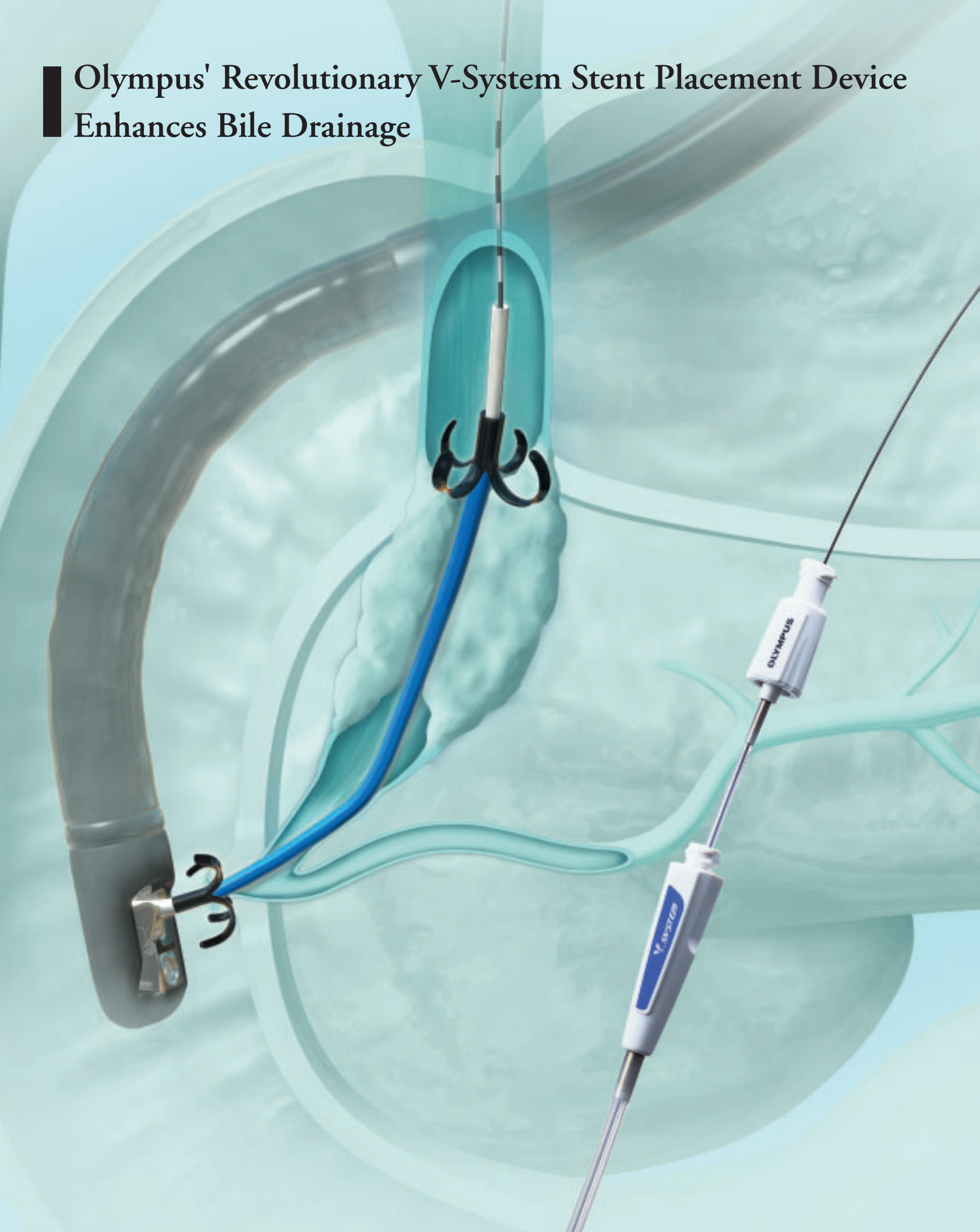
Endo**Therapy**
BEYOND THE SCOPE



Single Use Biliary Stent V
Single Use Stent Insertion Kit V

QuickPlace^V

Olympus' Revolutionary V-System Stent Placement Device Enhances Bile Drainage



The Innovative V-System Design Lets You Proceed with Confidence and Efficiency

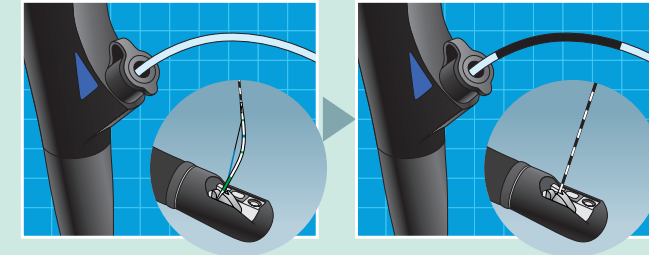
The V-System is a complete system that integrates Olympus endoscopes and EndoTherapy devices. The revolutionary V-System design offers the option of guidewire manipulation by the physician or the assistant, allows easier exchange of catheters, and enhances cannulation capability.



V-Marking

Indicates when to raise and lower the V-Groove forceps elevator.

The exclusive V-Marking is located on the proximal side of the sheath. When this marking reaches the channel port on the scope's control section, it indicates that the device tip has reached the distal end of the scope and the V-Groove forceps elevator may be lowered. When withdrawing the device from the scope, the same marking indicates when to raise the elevator to lock the guidewire.



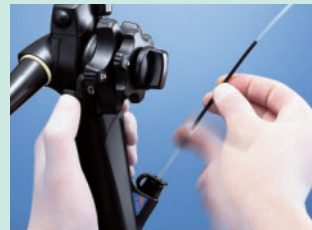
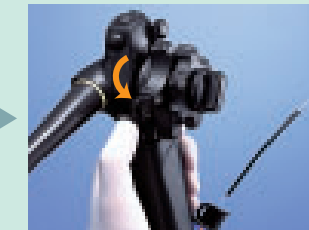
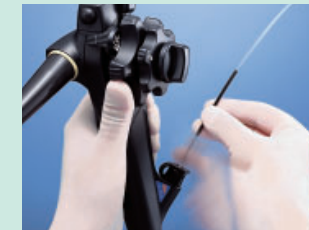
V-System device replacement procedure

Confirm the position of the V-Marking on the V-System EndoTherapy accessory.

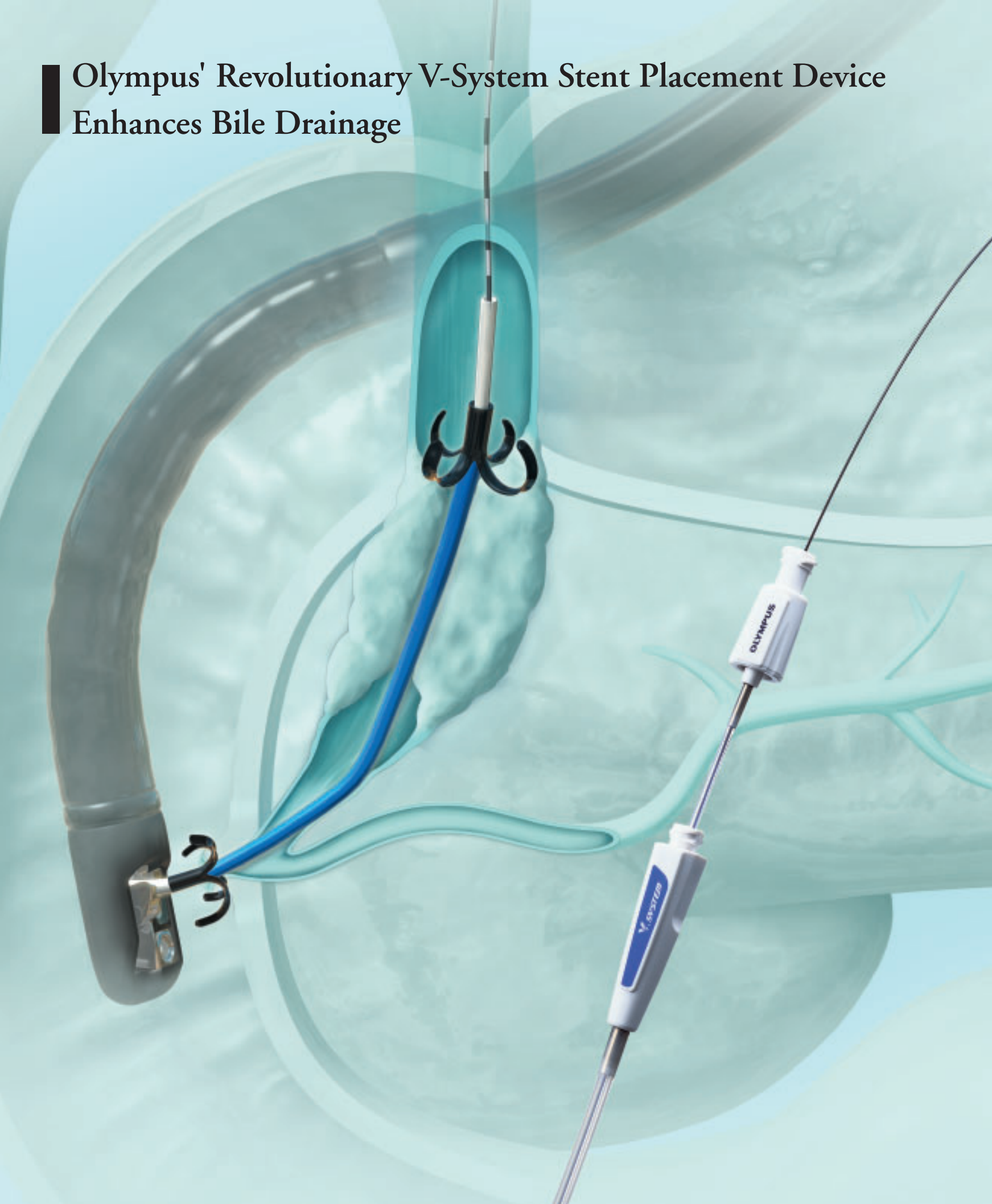
When the V-Marking is completely visible above the instrument channel port, lift the forceps elevator to lock the guidewire.

The guidewire is now locked into the V-Groove.

Completely remove the device.



Olympus' Revolutionary V-System Stent Placement Device Enhances Bile Drainage



The Combination of the Pre-loaded Feature and the Comprehensive Line of Innovative Stent Designs Ensure Quick, Efficient and Effective Biliary Drainage

Exclusive combination of materials optimizes passage through a strictured bile duct



Olympus's DoubleLayer biliary stents feature a unique DoubleLayer construction to optimize performance. The material used in the inner layer features superior water-repellent properties that minimize bile adhesion and accumulation on the interior surface, while the more rigid material in the outer layer provides the stiffness necessary to facilitate smooth insertion. This unique design allows the stent to pass easily through a strictured bile duct.

Features

- Unique double-layer construction with a different material in each layer. The inner layer uses a specially processed fluorinated material that makes the inner surface five times smoother than that of conventional plastic stents. The outer layer is made of a polyamide elastomer to provide the stiffness and elasticity needed to ensure easy passage through a stricture. A stainless steel mesh separates the two layers.
- No flap holes or side holes. The DoubleLayer design eliminates these holes to reduce bile accumulation in the stent lumen.
- Four flaps at both the distal and duodenal ends ensure secure placement in the bile duct and increase contrast in fluoroscopic images to facilitate position confirmation during stent placement.
- Two types are available: duodenal bend and center bend types. DoubleLayer stents are available in 50/70/90/120/150mm lengths for both of duodenal and center bend types (length between flaps). In addition, 30/40/60/80/100/110/130/140mm length are also available as single items.



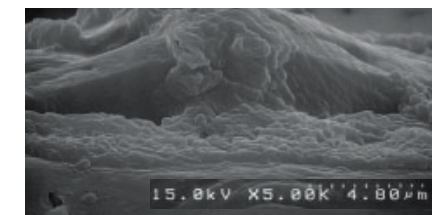
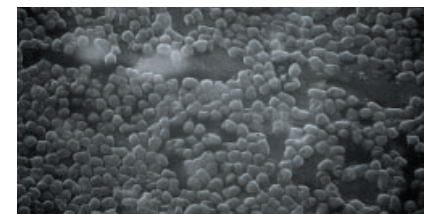
PBD-421 (Duodenal Bend Type)



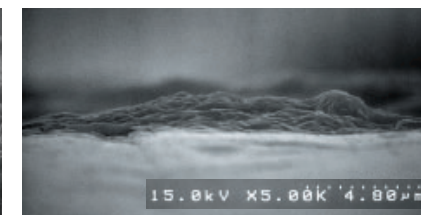
PBD-422 (Center Bend Type)

Comparison of clogging substance accumulation

(Electronic Microscope 5000X)



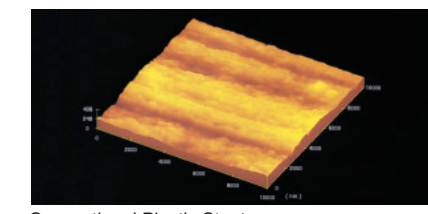
Conventional Plastic Stent



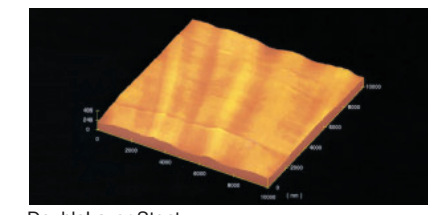
DoubleLayer Stent

Comparison of inner surface

(Atomic Force Microscope 7500000X)



Conventional Plastic Stent

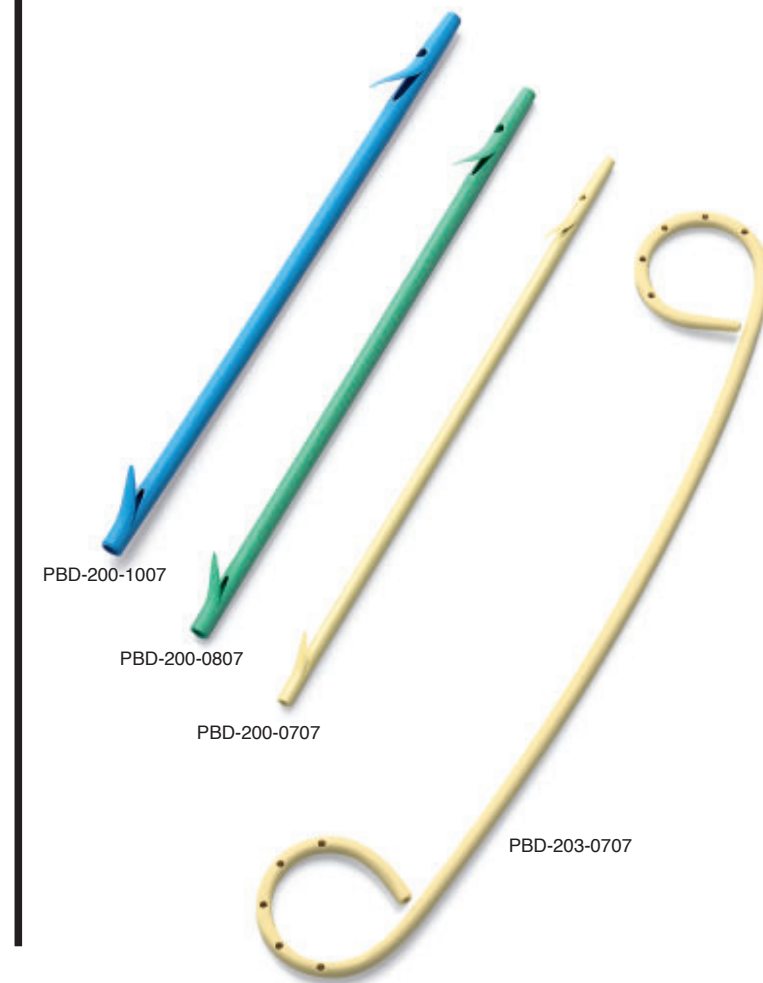


DoubleLayer Stent

Easily viewed under fluoroscopy, Olympus polyethylene stents provide the perfect combination of flexibility and stiffness

Features

- Olympus polyethylene stents offer just the right combination of flexibility and stiffness. The tapered design of the distal end facilitates insertion into the bile duct. The flaps and side holes are designed to increase reliability by helping to prevent the stents from moving or dislodging in the duodenum.
- Stents are available in diameters of 7 Fr., 8.5Fr., and 10 Fr.
- The straight models are available in six lengths (30/50/70/90/120/150mm), and the center bend (duodenal) and pigtail models are available in 5 lengths:
 - Center/duodenal bend : 50/70/90/120/150mm
 - Pigtail : 30/40/70/100/150mm
 Straight and center/duodenal bend stents are also available as single items. Pigtail-type stents are available only as single items.
- Olympus polyethylene stents are designed with a shorter proximal end to minimize risk of damage to the duodenal wall.



PBD-200-1007

PBD-200-0807

PBD-200-0707

PBD-203-0707



Unique stent placement device design also available in preloaded models



Available in a length of 2,090mm, the QuickPlaceV does exactly what its name suggests — it enables quick placement of stents. The QuickPlaceV is specially designed to ensure the easiest possible handling when used with the V-System endoscope and LinearGuideV. To make stent placement even easier, models with preloaded stents are also available. For added convenience and safety, all models are single-use.

Specifications, design and accessories are subject to change without any notice or obligation on the part of the manufacturer.

OLYMPUS[®]

www.olympus.com

OLYMPUS CORPORATION

Shinjuku Monolith, 3-1 Nishi-Shinjuku 2-chome, Shinjuku-ku, Tokyo 163-0914, Japan

OLYMPUS EUROPA GMBH

Postfach 10 49 08, 20034 Hamburg / Wendenstrasse 14-18, 20097 Hamburg, Germany

OLYMPUS AMERICA INC.

2 Corporate Center Drive, Melville, N.Y. 11747-3157, U.S.A.

OLYMPUS LATIN AMERICA, INC.

6100 Blue Lagoon Drive, Suite 390 Miami, Florida 33126-2087, U.S.A

KEYMED LTD.

Keymed House, Stock Road, Southend-on-Sea, Essex SS2 5QH, England

OLYMPUS SINGAPORE PTE LTD.

491B River Valley Road #12-01/04, Valley Point Office Tower, Singapore 248373

OLYMPUS HONG KONG AND CHINA LIMITED

Room 1520-1527, Ocean Centre, 5 Canton Road, Tsimshatsui, Kowloon, Hong Kong

OLYMPUS BEIJING REPRESENTATIVE OFFICE

Room 1401, East Tower, Gong Yuan No6 Royal Palace, No6 Gong Yuan Xitie, JianGuoMenNei, DongCheng District, Beijing, 100005, China

OLYMPUS MOSCOW LIMITED LIABILITY COMPANY

117071, Moscow, Malaya Kaluzhskaya 19, bld. 1, fl.2, Russia

OLYMPUS AUSTRALIA PTY LTD.

31 Gilby Road, Mount Waverley, VIC., 3149, Australia

Printed in Japan F1089SB-3-0804