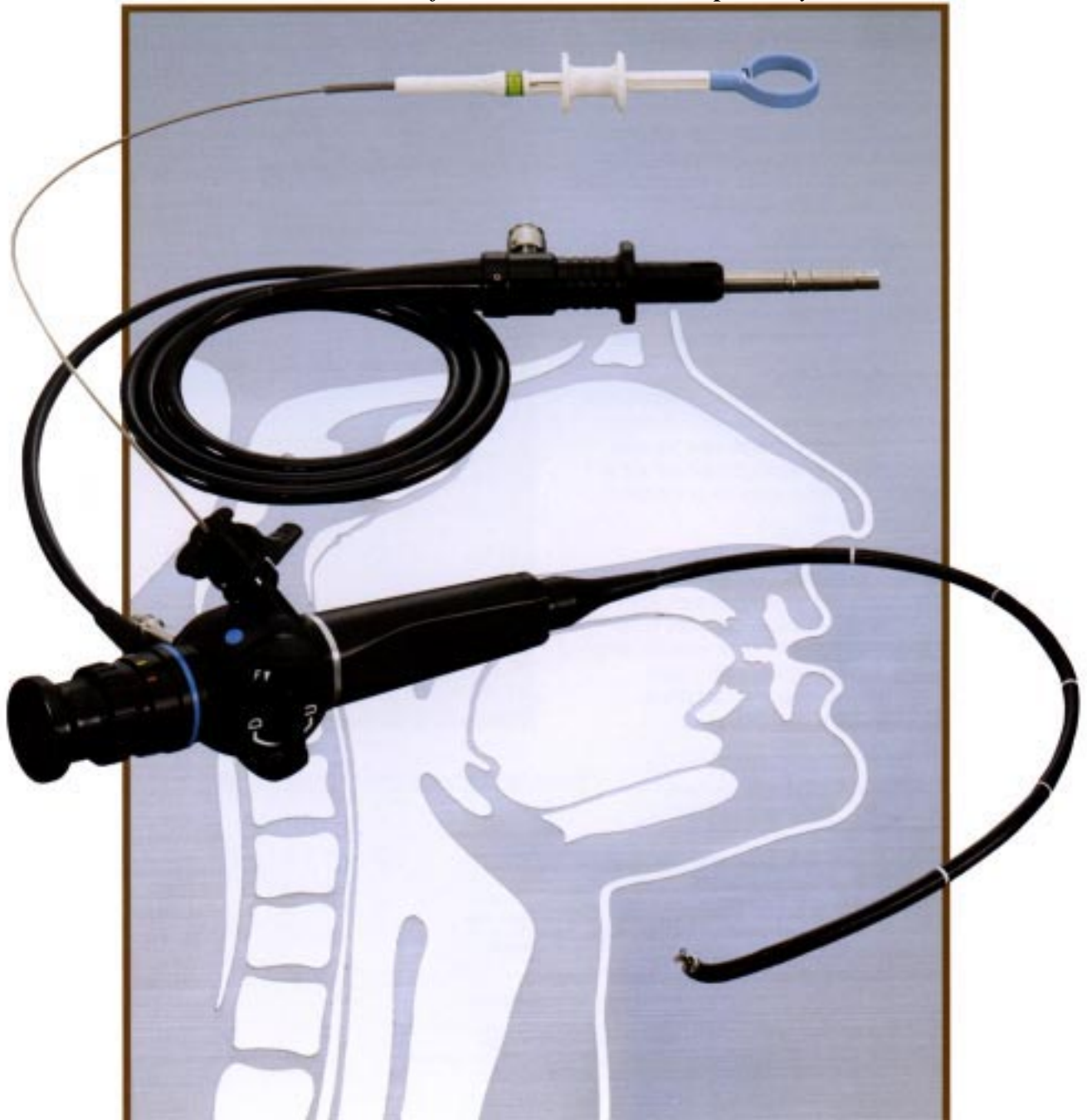


# OLYMPUS®

## OLYMPUS ENF TYPE T3 RHINO-LARYNGOFIBERSCOPE

*The 2.2mm Forceps Channel Combined With Its 150% Increase In Brightness And Improved Resolution Assures A New Level Of ENT Treatment Capability.*



# A Valuable Aid For Observation And Diagnosis; Ideal For Biopsy, Aspiration, And Removal Of Foreign Objects.



**R**emarkable Olympus improvement of brightness and resolution make viewing with the ENF TYPE T3 more precise and accurate. It is designed for easy orientation to further facilitate delicate procedures.

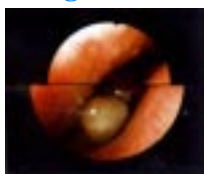
### Resolution improved approx. 139%\*

Vivid, powerfully precise images can now be obtained thanks to a major increase in image guide fibers.

### Brightness increased approx. 150%\*

Delicate procedures will benefit especially from images that have never been easier to see. With its 85° field of view, the ENF TYPE T3 offers optimal performance for observation from the nasopharynx to the vocal cords.

### Image size increased approx. 24%\*



To the benefits of improved resolution and enhanced brightness, Olympus adds increased image size as well. These three factors combined serve to reduce eye fatigue to an unprecedented degree.

### Forceps channel diameter increased 0.2 mm\*



While maintaining the same outside diameter, Olympus has been able to increase the forceps channel from 2.0 mm to 2.2 mm. This modification eases instrument insertion and improves aspiration capabilities.

\*As compared to current model.

### Secure design

Completely sealed construction of the aspiration plug section assures that foreign matter will never enter the unit. Smooth surface contours further facilitate complete cleaning.

BIOPSY FORCEPS			
Fenestrated	Fenestrated with needle	Ellipsoid	Alligator jaws
FB-19C	FB-34C	FB-21C	FB-15C
<ul style="list-style-type: none"> <li>• Angulation</li> </ul>		<ul style="list-style-type: none"> <li>• Distal end</li> </ul>	
<b>Optical System</b>	Field of view Direction of view Depth of field Illumination method	85° 0° (Forward viewing) Light guide system	
<b>Distal End</b>	Outer diameter	4.8 mm	
<b>Bending Section</b>	Range of tip bending	Up 130°, Down 130°	
<b>Insertion Tube</b>	Outer diameter	5 mm	
<b>Working Length</b>		365 mm	
<b>Total Length</b>		585 mm	
<b>Instrument Channel</b>	Inner diameter	2.2 mm	
<b>Biopsy Forceps</b>	Minimum visible distance	5 mm from distal end	
<b>Photo Documentation</b>	Still	OES Instant Camera OLYMPUS SCP 10 (with SCP Adapter AR P10)	
	TV	35 mm SLR Camera SC35/OM 1N (with OM AE Adapter SM ER3)  OES TV System OLYMPUS OTV S4	

Specifications are subject to change without any obligation on the part of the manufacturer.



Photographic, Medical, Microscopic  
Industrial & Business Equipment

## OLYMPUS

OLYMPUS OPTICAL CO., LTD.  
San-Ei Building, 22-2, Nishi Shinjuku 1-chome, Shinjuku-ku, Tokyo, Japan  
OLYMPUS OPTICAL CO.(EUROPA) GMBH.  
Postfach 10 49 08 20034, Wendenstrasse 14- 16 20097 Hamburg, Germany  
OLYMPUS AMERICA INC.  
Two Corporate Center Drive, Melville, New York 11747-3157 U.S.A.  
OLYMPUS KEYMED  
KeyMed House, Stock Road, Southend-on-Sea, Essex SS2 5QH, England  
OLYMPUS SINGAPORE PTE LTD  
BLK 211, Henderson Road # 13-03, Henderson Industrial Park, Singapore 0315  
OLYMPUS BEIJING REPRESENTATIVE OFFICE  
Room No 3406 Beijing Jing Guang Centre, Hu Jia Lou, Chao Yang Qu, Beijing, China