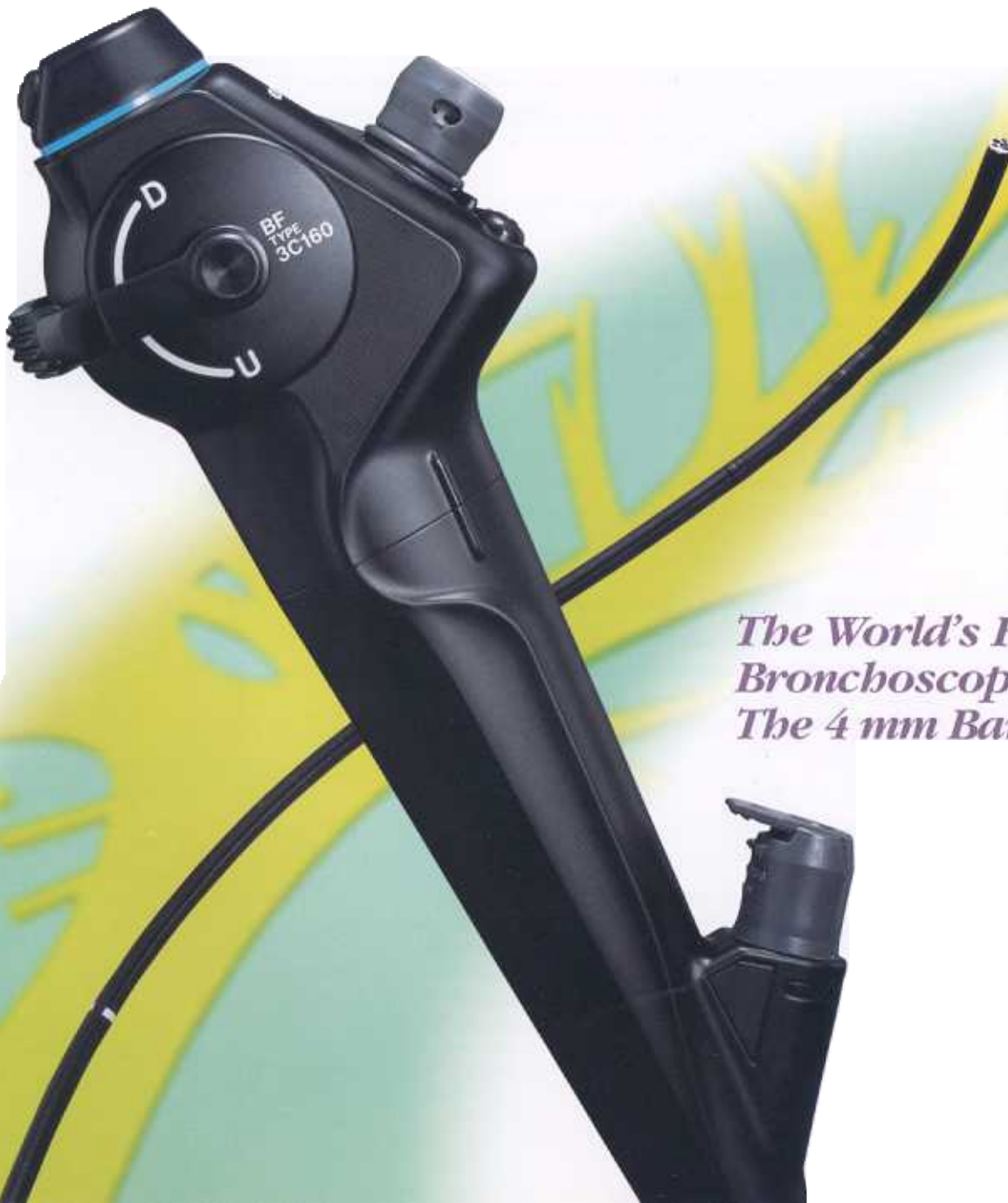


OLYMPUS[®]



EVIS EXERA BRONCHOVIDEOSCOPE
OLYMPUS **BF** TYPE **3C160**



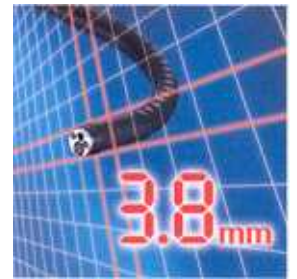
*The World's First Video
Bronchoscope To Break
The 4 mm Barrier*

Breakthrough Design Offers A Super-Slim 3.8 mm Insertion Tube Diameter With A 1.2 mm Inner Channel Diameter

Measuring a mere 3.8 mm across at the distal end of the insertion tube, the BF TYPE 3C160 is the first videoscope that truly lives up to the term "ultra-slim." Incorporating the smallest CCD ever developed for endoscopic applications, this remarkably narrow scope lets you go even deeper into the bronchi than you could with a standard scope. Thanks to Olympus's advanced CCD miniaturization technology, you also get superb video image quality. We've even managed to make enough room to incorporate a 1.2 mm channel for biopsy and suction capability.

Ultra-Narrow 3.8 mm Diameter Insertion Tube — The Slimmest Ever In A Videoscope

The fact that the BF-3C160 is a videoscope makes its remarkably slim insertion tube all the more impressive. Measuring a mere 3.8 mm across, the BF-3C160 is the world's first channel-equipped videoscope to break the 4 mm barrier. This unique ultra-slim design was made possible by the development of the world's smallest CCD for endoscopes (as of September 2000).



Efficient Biopsy And Suction Capability Produced By A 1.2 mm Channel

In spite of its ultra-slim diameter, you can expect biopsy and suction capability from this scope. The 1.2 mm channel is wide enough to allow use of instruments such as a biopsy forceps (FB-56D-1) or cytology brush (BC-201C-1006).



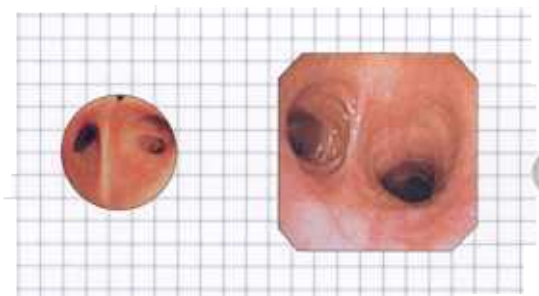
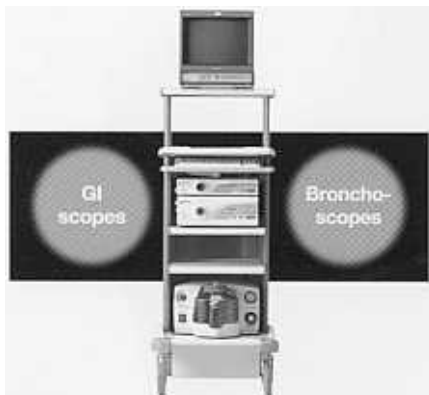
Crystal-Clear, High-Resolution Video Images

Until now, size considerations meant that bronchoscopes with an outer diameter under 4 mm have had to use fiberoptic imaging technology. Now, thanks to Olympus's remarkable achievements in CCD miniaturization, you can take advantage of sharp, clear video images with none of the dots characteristic of fiberoptic images.



Dual-Purpose Design Increases Endoscopy Suite Efficiency

Because the CV-160 Video System Center is designed to accommodate either bronchoscopic or gastrointestinal endoscopes, your EVIS EXERA System can now be used for both procedures. This video system is interchangeable with an EVIS EXERA Gastrointestinal Videoscope, allowing you to streamline your endoscopy suite and reduce overall costs.



EVIS EXERA
BRONCHOVIDEOSCOPE
BF-3C160



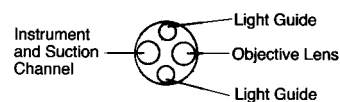
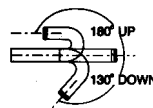


EVIS EXERA BRONCHOVIDEOSCOPE OLYMPUS **BF** TYPE **3C160**



Specifications

Optical System	Field of view Direction of view Depth of field	120° 0° (Forward viewing) 3 ~ 100 mm
Insertion Tube	Distal end outer diameter Insertion tube outer diameter Working length	3.8 mm 3.8 mm 600 mm
Instrument Channel	Channel inner diameter Minimum visible distance	1.2 mm 3 mm from distal end
Bending Section	Angulation range	UP 180°, DOWN 130°
High Frequency Compatibility		NO
Total Length		870 mm



Efficient, Ergonomic Design Is Easy To Use And Maintain

Ergonomically Designed Control Section And Switch Layout

Designed to minimize operator fatigue and maximize efficiency, the control section is contoured to fit comfortably in the operator's left hand. Switch functions can be user-defined and all switches are arranged on the control section in a simple, easy-to-remember configuration that facilitates single-handed operation.



Reprocessing Capability For Reliability You Can Count On

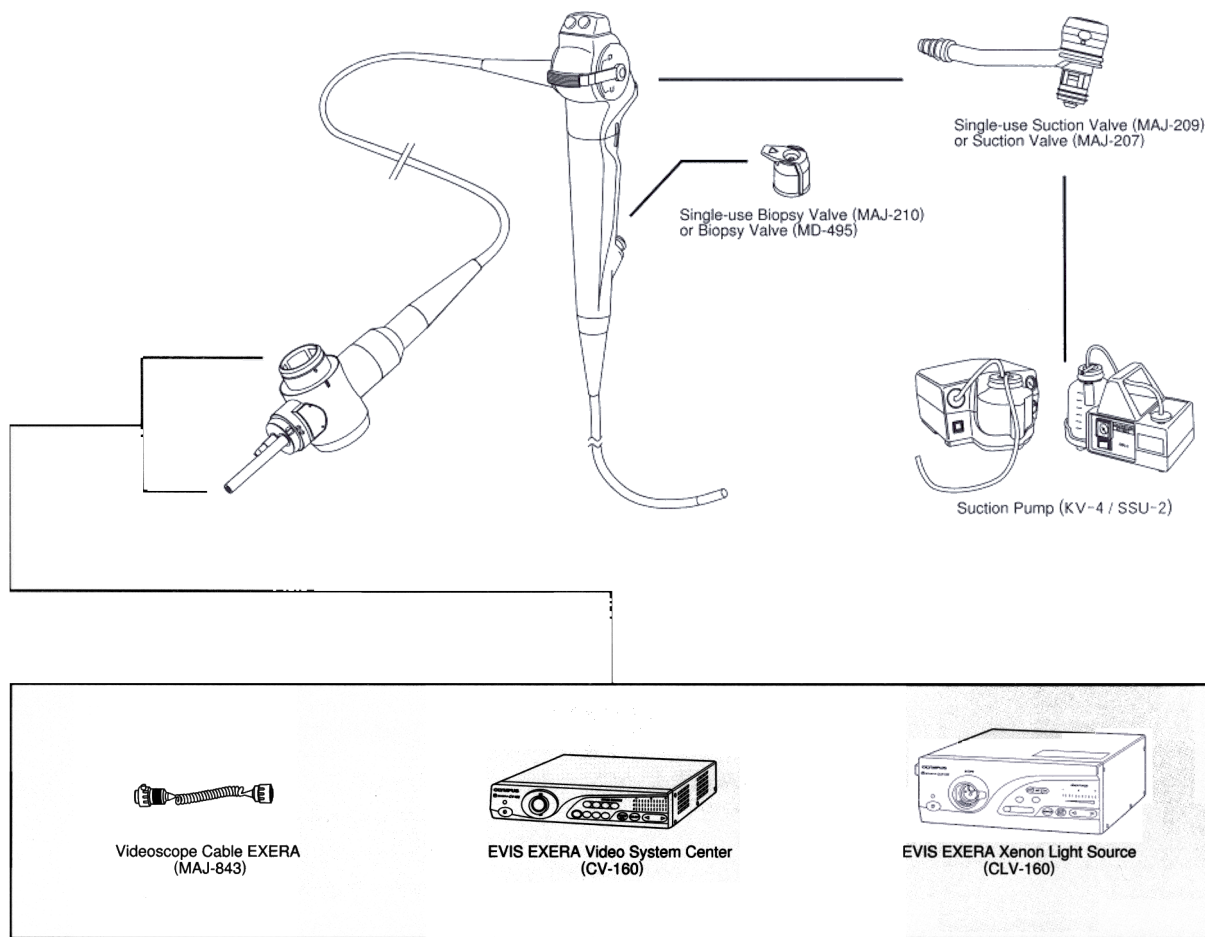
To make the scope easier to wash and brush, and to optimize the effect of disinfectant immersion, the exterior is designed to minimize surface protrusions and indentations while the interior features a simplified, jointless channel configuration. For added convenience, all reprocessing accessories are either autoclavable or disposable.



Standardized Accessories Can Be Used With All Scopes

The accessories are designed to the same specifications as those for Olympus's previous and current bronchovideoscopes and bronchofiberscopes. This makes it easy to use the same accessory with different scopes, reducing equipment costs and simplifying accessory management.





Olympus business areas



Medical and health-care area



Imaging and information area



Industrial applications area

OLYMPUS
FOCUS ON LIFE

OLYMPUS OPTICAL CO., LTD.
2951 Ishikawa-cho, Hachioji-shi, Tokyo 192-8507, Japan
OLYMPUS OPTICAL CO. (EUROPA) GMBH.
Postfach 10 49 08, 20034 Hamburg / Wendenstrasse 14-16, 20097 Hamburg, Germany
OLYMPUS AMERICA INC.
2 Corporate Center Drive, Melville, N.Y. 11747-3157, U.S.A.
OLYMPUS KEYMED
Keymed House, Stock Road, Southend-on-Sea, Essex SS2 5QH, England
OLYMPUS SINGAPORE PTE LTD.
491B River Valley Road #12-01/04, Valley Point Office Tower, Singapore 248373
OLYMPUS HONG KONG AND CHINA LIMITED.
Room 11320-11327, Ocean Centre, 5 Canton Road, Tsimshatsui, Kowloon, Hong Kong
OLYMPUS BEIJING REPRESENTATIVE OFFICE
Rm. 818, South Tower, Beijing Kerry Centre, No.1 Guanghua Road, Chaoyang District, Beijing, 100020, China
OLYMPUS MOSCOW LIMITED LIABILITY COMPANY
117071, Moscow, Malaya Kaluzhskaya 19, bld. 1, fl.2, Russia
OLYMPUS AUSTRALIA PTY. LTD.
1/104 Ferntree Gully Road, Oakleigh, VIC 3186, Australia

<http://www.olympus.com>