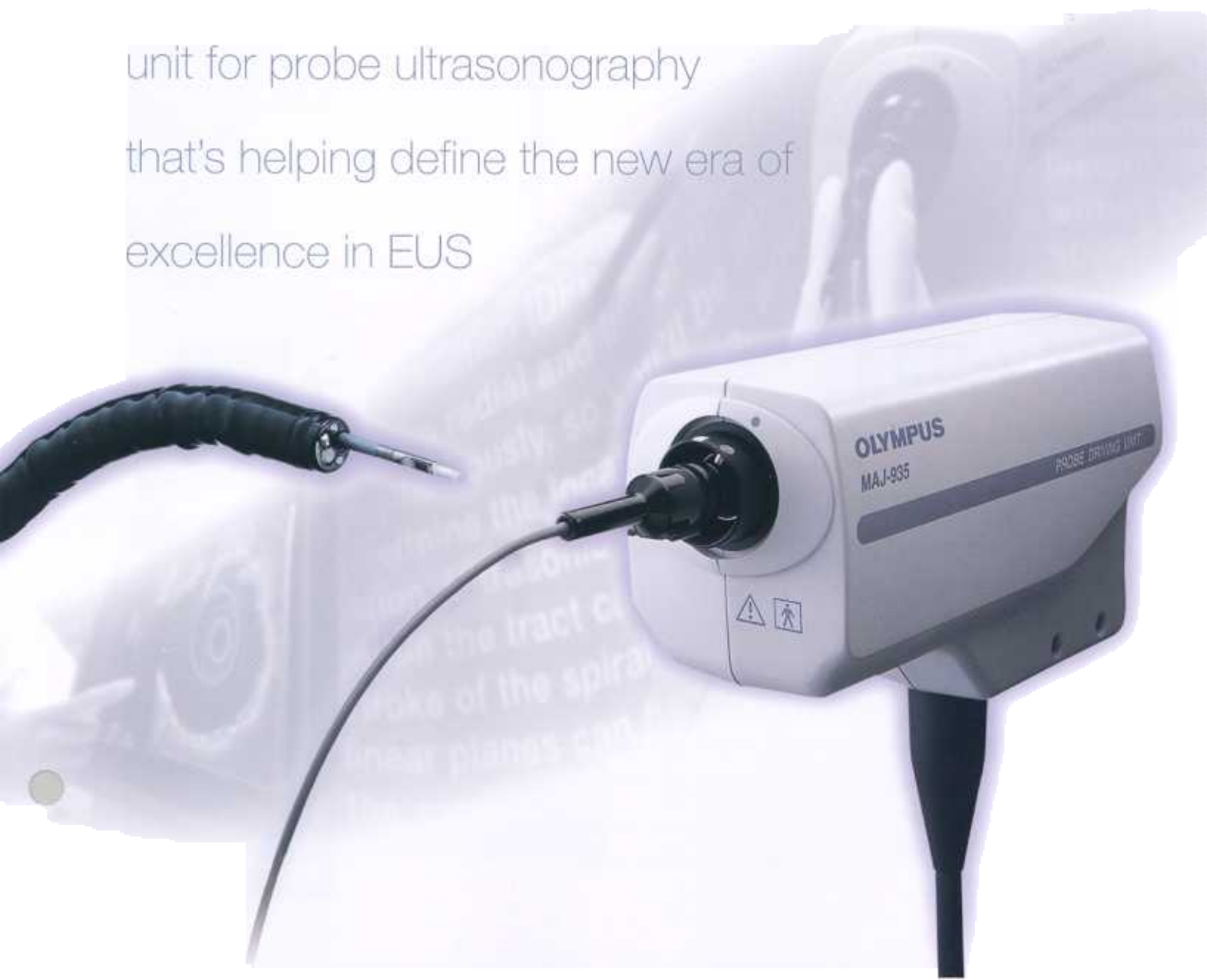


PROBE DRIVING UNIT

MAJ-935

Introducing a versatile, compact driving unit for probe ultrasonography that's helping define the new era of excellence in EUS



*Optimized For Use With Olympus's Versatile Line Of Conventional Probes,
This Compact Probe Driving Unit Offers New Dual-Plane
Reconstruction Scanning Capability*

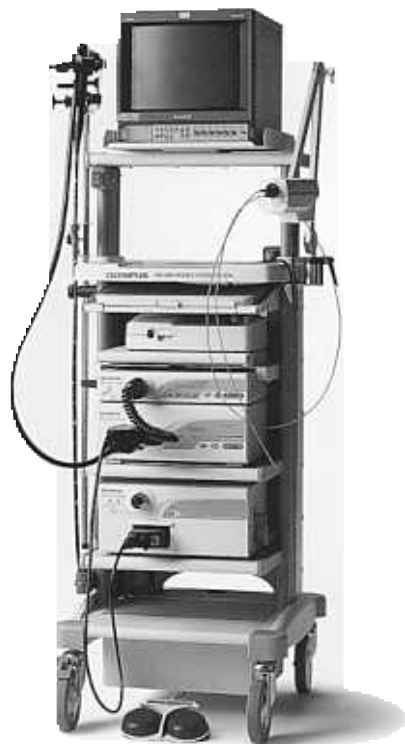


PROBE DRIVING UNIT

MAJ-935

Designed to accommodate a variety of Olympus ultrasonic probes, the MAJ-935 adds a new dimension to probe ultrasonography.

The MAJ-935 Probe Driving Unit makes it possible for you to perform EUS procedures without a dedicated ultrasonic endoscope. Simply connect the MAJ-935 to the EU-M60 Endoscopic Ultrasound Center and insert an Olympus ultrasonic probe into the channel of the standard endoscope. The high frequencies available with ultrasonic probes enable observation of subtle textures in early-stage lesions, while their narrow diameters make it possible to perform intraductal ultrasonography. And, if you connect a DPR-compatible probe, you'll also be able to take advantage of dual-plane reconstruction (DPR) scanning with simultaneous display of radial and linear images.



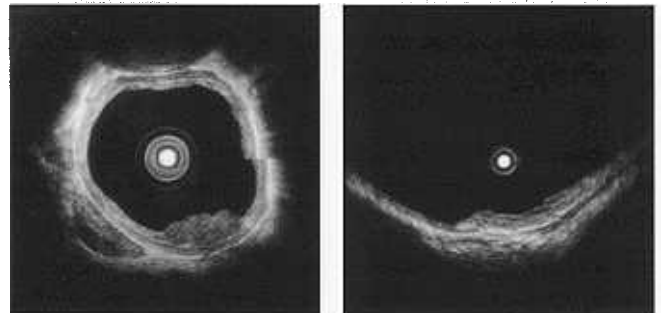
Olympus's wide selection of ultrasonic probes makes it easy to choose the one that's right for your needs.

- The MAJ-935 has been designed to work with Olympus's wide selection of ultrasonic probes. Available in a variety of frequencies, outer diameters and tip designs, any one of these can be combined with the MAJ-935 and your endoscope to match the specific requirements of any given procedure.



Outstanding imaging capability lets you do more with EUS.

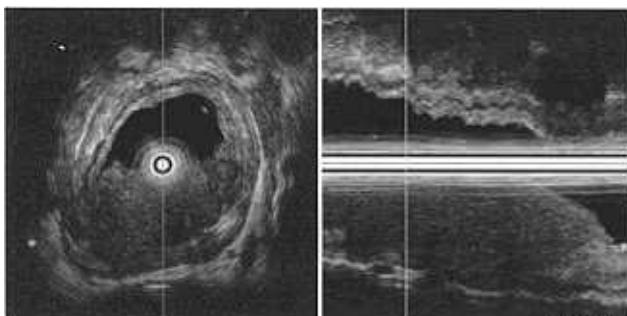
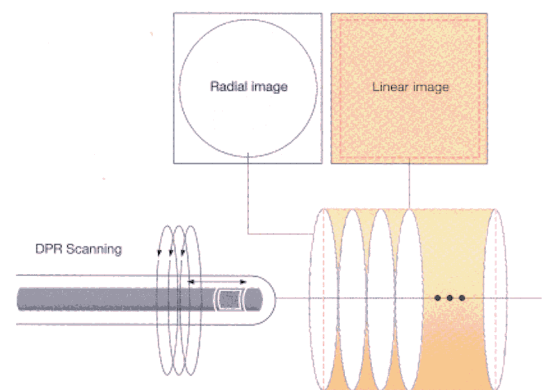
- The narrow diameters of probes make it possible to assess lesions where ultrasonic endoscopes cannot advance, such as in strictures, and also to perform intraductal ultrasonography.
- Ultrasonic probes also enable detailed observation at high frequencies, providing higher resolution of superficial layers.
- Balloon type probes are effective for use in areas where water cannot be pooled easily, such as in the esophagus.



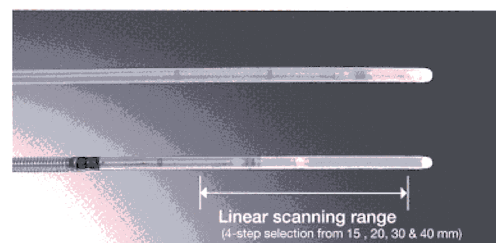
By combining radial and linear images, DPR scanning enables detailed imaging of lesion extensions.

- When a DPR-compatible probe is used with the MAJ-935, you can use dual-plane reconstruction (DPR) scanning to display radial and linear images simultaneously after a single stroke of the spiral scan.
- DPR makes ultrasonic images easier to understand, since it generates two dimensions that correlate directly with one another.

Schematic Diagram of DPR Scanning



DPR display



Linear scanning range
(4-step selection from 15, 20, 30 & 40 mm)

MAJ-935 Specifications

Size	Dimensions (Main Unit)	193mm(W)×70mm(D)×102mm(H)
	Total Length	1850mm
	Weight	1.4kg

Specifications of Probes

Model	Frequency	Scanning Method	Working Length	Total Length	Insertion Tube Outer Diameter
UM-2R	12MHz	Mechanical radial scanning	2050mm	2140mm	2.4mm
UM-3R	20MHz				2.4mm
UM-S20-20R	20MHz				1.7mm(distal end side), 2.0mm(proximal side)
UM-S30-25R	30MHz				2.4mm
UM-S30-20R	30MHz				1.7mm(distal end side), 2.0mm(proximal side)
UM-BS20-26R	20MHz				2.6mm(incl. balloon sheath MAJ-643R)
UM-G20-29R	20MHz				2.0mm(distal end side), 2.2mm(proximal side)

Model	Frequency	Scanning Method	Length Insertion Section	Insertion Section Maximum Outer Diameter
RU-75M-R1	7.5MHz	Mechanical radial scanning	150mm	12mm
RU-12M-R1	12MHz			

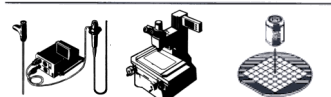
Olympus business areas



Medical and health-care area



Imaging and information area



Industrial applications area

OLYMPUS®

FOCUS ON LIFE

OLYMPUS OPTICAL CO., LTD.

2851 Ishikawa-cho, Hachioji-shi, Tokyo 192-8501, Japan

OLYMPUS OPTICAL CO. (EUROPA) GMBH.

Postfach 10 49 06, 20004 Hamburg / Wardenstrasse 14-16, 20097 Hamburg, Germany

OLYMPUS AMERICA INC.

2 Corporate Center Drive, Melville, N.Y. 11747-3157, U.S.A.

OLYMPUS KEYMED

Keymed House, Stock Road, Southend-on-Sea, Essex SSO 5QH, England

OLYMPUS SINGAPORE PTE LTD.

491B River Valley Road #12-01/04 Valley Point Office Tower, Singapore 248373

OLYMPUS HONG KONG AND CHINA LIMITED.

Room 1520-1527, Ocean Centre, 5 Canton Road, Tsimshatsui, Kowloon, Hong Kong

OLYMPUS BEIJING REPRESENTATIVE OFFICE

18th Floor, South Tower, Beijing Kerry Centre, No. 11 Guanghua Road, Chaoyang District, Beijing 100020, China

OLYMPUS MOSCOW LIMITED LIABILITY COMPANY

117071, Moscow, Malaya Kaluzhskaya 13, str. 1, R.S. Russia

OLYMPUS AUSTRALIA PTY. LTD.

1/104 Ferntree Gully Road, Oakleigh, VIC 3166, Australia

<http://www.olympus.com>

Printed in Japan F894SB-3-0901