

OLYMPUS[®]

Your Vision, Our Future

EVIS EXERA II™ BRONCHOVIDEOSCOPE
OLYMPUS BF TYPE 1TQ180

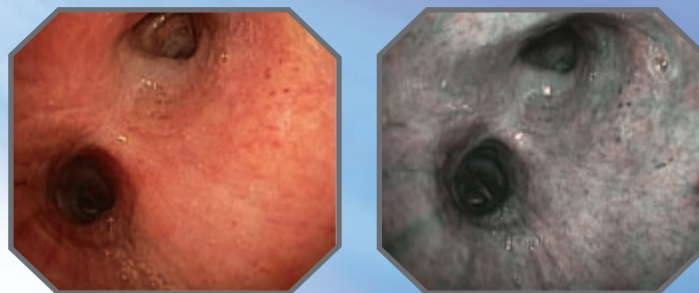
EVIS
EXERA II™



*Ideal for endobronchial treatment,
the BF-1TQ180 now allows you to have
both high image quality and a large
instrument channel in a single bronchoscope*



EVIS EXERA II™ BRONCHOVIDEOSCOPE
OLYMPUS BF TYPE 1TQ180




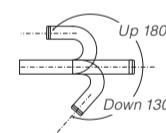
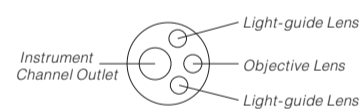
■ Main Features

- Superb high-resolution images clearly depict the mucosal surface of the tracheobronchial tree.
- Large full screen image size enables easier observation that helps to improve the efficiency of bronchoscopic treatment.
- 2.8 mm diameter channel accommodates a wide range of EndoTherapy accessories and EBUS probes, while providing powerful suction capability.
- Narrow Band Imaging™ capability enhances observation of capillary and mucosal structures.
- Compatible with Olympus electrocautery devices and laser treatment (Nd: YAG & 810 nm diode).
- Fully compatible with the Olympus CV-180 video processor and CLV-180 light source (and CV-160/CV-140).
- Scope ID function stores individual scope information and displays it on the monitor to help facilitate data management in pulmonary labs and operating rooms.



Specifications

Optical System	Field of view	120°
	Direction of view	0° (Forward viewing)
	Depth of field	3 ~ 100 mm
Insertion Tube	Distal end outer diameter	6.3 mm
	Insertion tube outer diameter	6.2 mm
	Working length	600 mm
Instrument Channel	Channel inner diameter	2.8 mm
	Minimum visible distance	3 mm from distal end
	Endotherapy accessory entrance/exit position in field of view	
	Angulation range	UP 180°, DOWN 130°
Bending Section	Angulation range	UP 180°, DOWN 130°
Electro-Cautery Instrument Compatibility		YES (Compatible with Olympus devices)
Laser compatibility		Nd: YAG, 810 nm diode
Total Length		870 mm



Specifications, design and accessories are subject to change without any notice or obligation on the part of the manufacturer.

OLYMPUS®

OLYMPUS MEDICAL SYSTEMS CORP.
 Shinjuku Monolith, 2-3-1 Nishi-Shinjuku, Shinjuku-ku, Tokyo 163-0914, Japan

For a complete listing of sales and distribution locations visit:
www.olympus.com

Printed in Japan G000000-0000