

EVIS EXERA II BRONCHOVIDEOSCOPE OLYMPUS BF TYPE Q180



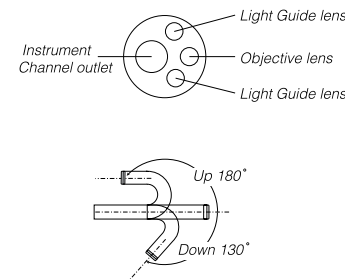
Main Features

- Superior image quality and a larger image size redefines examination and treatment in the bronchial tree.
- Narrow Band Imaging capability to highlight hidden tissue structures.
- Despite superior image quality, this scope features a slim design — measuring 5.1 mm in diameter at the insertion tube and 5.5 mm in diameter at the distal end.
- Standard 2.0 mm diameter channel to accommodate a wide variety of endo-therapy accessories.
- Compatible with Olympus electrocautery devices.
- Fully compatible with the Olympus CV-180 (CV-160/140) video processor and CLV-180 light source.
- Scope ID function stores individual scope information and displays it on the monitor to help facilitate management in pulmonary labs and operating rooms.



Specifications

Optical System	Field of view	120°
	Direction of view	0° (Forward viewing)
	Depth of field	3 ~ 100 mm
Insertion Tube	Distal end outer diameter	5.5 mm
	Insertion tube outer diameter	5.1 mm
	Working length	600 mm
	Channel inner diameter	2.0 mm
Instrument Channel	Minimum visible distance	3 mm from distal end
	Endo therapy accessory entrance/exit position in field of view	
	Angulation range	UP 180°, DOWN 130°
Electro-Cautery Instrument Compatibility	YES (Compatible with Olympus devices)	
Total Length	870 mm	



Ancillary product



EVIS EXERA II CV-180 Video System Center
Designed to accommodate a wide range of scopes from a myriad of specialties, this leading-edge video processor offers high-resolution images and state-of-the-art image processing capabilities such as Narrow Band Imaging as well as a range of practical digital solutions.



EVIS EXERA II CLV-180 Xenon Light Source
With its powerful 300-watt xenon lamp, this light source unit delivers brilliant, shadow-free illumination and is equipped with filters that have been specially coated for use in Narrow Band Imaging. A new button on the front panel lets you turn the lamp on or off without having to power down the light source unit itself.

Specifications, design and accessories are subject to change without any notice or obligation on the part of the manufacturer.



www.olympus.com

OLYMPUS MEDICAL SYSTEMS CORP.
Surgica Machida, 3-1 Machi-Shinjuku 2-chome, Shinjuku-ku, Tokyo 163-5814, Japan
OLYMPUS MEDICAL SYSTEMS EUROPA GMBH
Postfach 10 49 08, 20034 Hamburg / Wardenstrasse 14-18, 20097 Hamburg, Germany
OLYMPUS AMERICA INC.
2 Corporate Center Drive, Melville, N.Y. 11747-3157, U.S.A.
OLYMPUS SURGICAL & INDUSTRIAL AMERICA INC.
One Corporate Drive, Orangeburg, New York 10962, U.S.A.
OLYMPUS LATIN AMERICA, INC.
6100 Blue Lagoon Drive, Suite 390 Miami, Florida 33126-2087, U.S.A.
KEYMED LTD.
Keymed House, Stock Road, Southend-on-Sea, Essex SS2 5QH, England

OLYMPUS SINGAPORE PTE LTD.
481B River Valley Road #12-01/04 Valley Point Office Tower, Singapore 248373
OLYMPUS HONG KONG AND CHINA LIMITED
Room 1520-1527 Ocean Centre, 5 Canton Road, Tsimshatsui, Kowloon, Hong Kong
OLYMPUS (BEIJING) SALES & SERVICE CO., LTD.
Room 1502, NCA Tower, A12 Jianguomenwai Avenue Chaoyang District Beijing, 100022, China
OLYMPUS MOSCOW LIMITED LIABILITY COMPANY
117071, Moscow, Malaya Koltovskaya 10, 9/1, 1, 121, Russia
OLYMPUS AUSTRALIA PTY LTD
31 Gilby Road, Mount Waverley, VIC., 3140, Australia



Your Vision, Our Future

EVIS EXERA II BRONCHOVIDEOSCOPE
OLYMPUS BF TYPE Q180



BF-Q180—A stunning new level of imaging performance in bronchoscopy



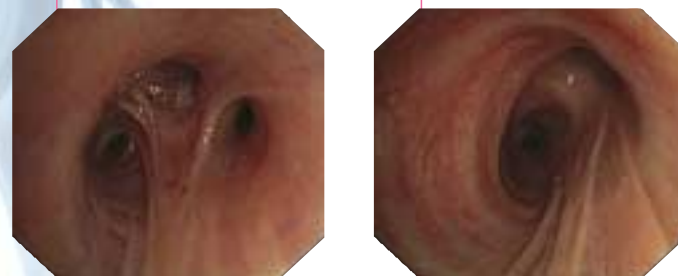
Dramatically improved image size and quality in a slim, easy-to-insert design

See the differences the BF-Q180 offers you

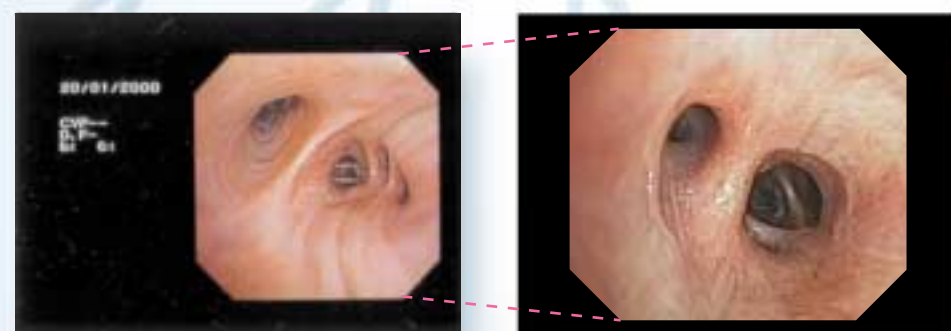
The new BF-Q180 has dramatically improved image quality and greatly enlarged image size in comparison to conventional bronchoscopes, yet its distal end measures just 5.5 mm and its insertion tube a thin 5.1 mm.

Superior image quality

The image quality of the BF-Q180 is something new in bronchoscopy. This extraordinary imaging is capable of rendering all details of the bronchial tree with superb sharpness and clarity.

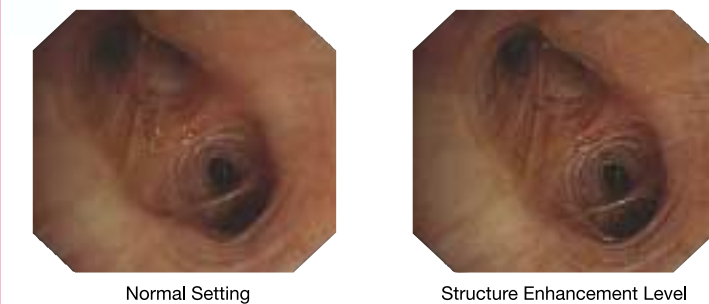


Enlarged image size for easier observation

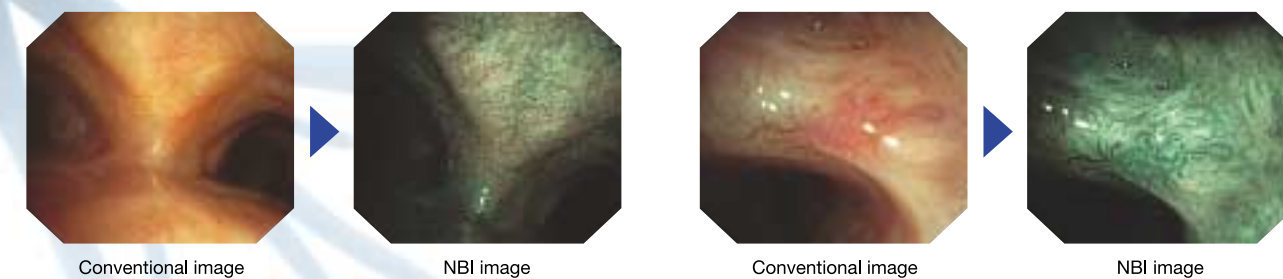


The BF-Q180 not only delivers dramatically improved image quality, it also provides a much larger image size than its predecessors. Not only are images clearer and sharper, they are larger and easier to observe so you can perform bronchoscopy with more ease and confidence.

Structure Enhancement



NBI Images



What is Narrow Band Imaging (NBI)?

NBI is an optical imaging technology. It works by altering the white light source to consist of specific wavelength bands, which take advantage of the scattering and absorption properties of human tissues. Narrow band illumination, which is strongly absorbed by hemoglobin and penetrates only the surface of tissues, is ideal for enhancing the contrast between bronchial mucosa and capillaries. As a result, under narrow band illumination, capillaries on the mucosal surface are displayed dark while the mucosa appears bright.

