

OLYMPUS[®]

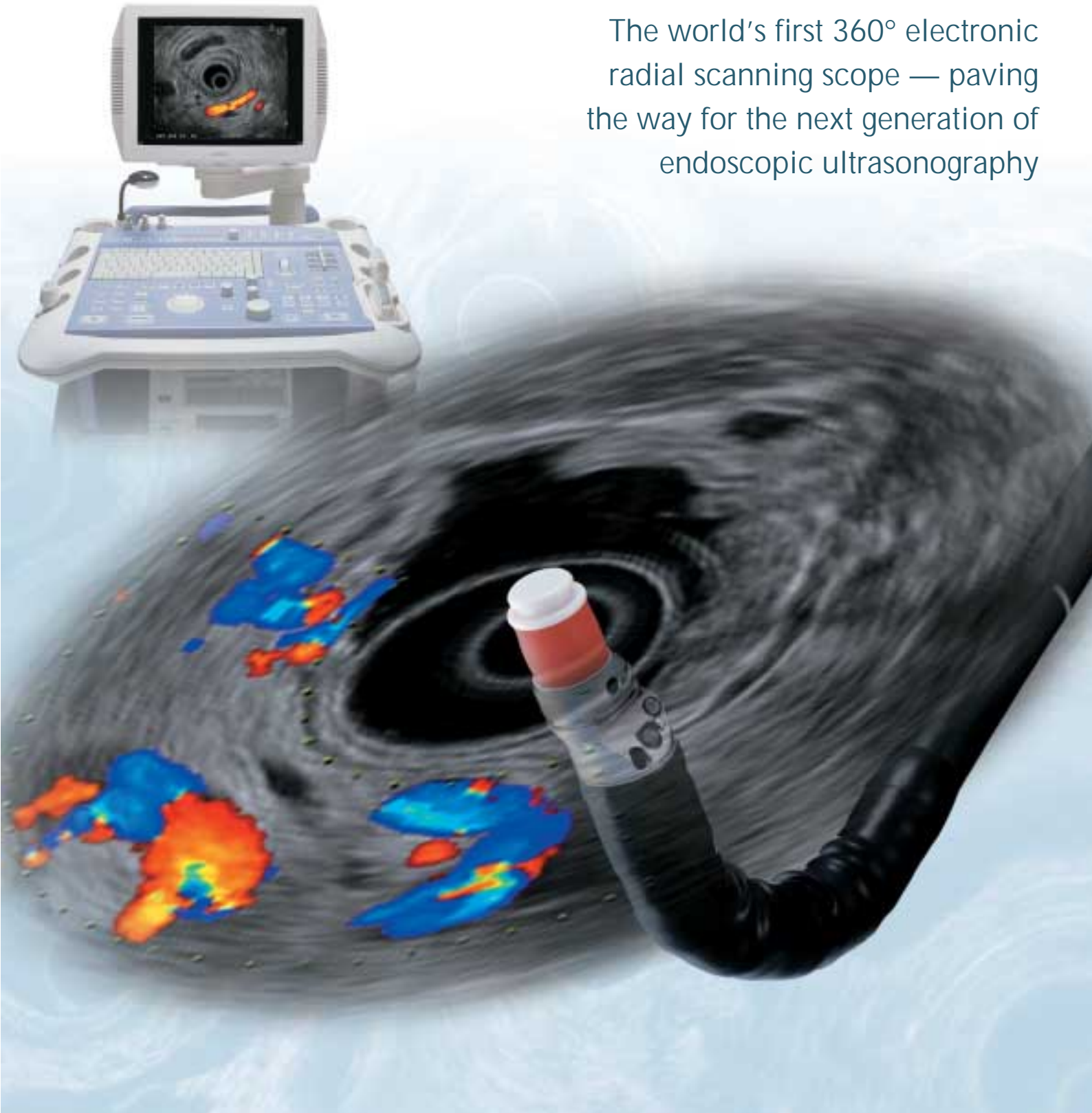
Your Vision, Our Future

EUS
ENDOSCOPIC ULTRASOUND SYSTEM

ULTRASONIC GASTROVIDEOSCOPE

OLYMPUS **GF** TYPE **UE160-AL5**

The world's first 360° electronic
radial scanning scope — paving
the way for the next generation of
endoscopic ultrasonography

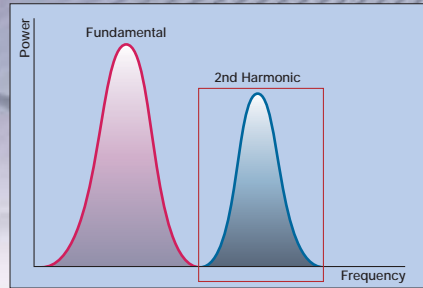
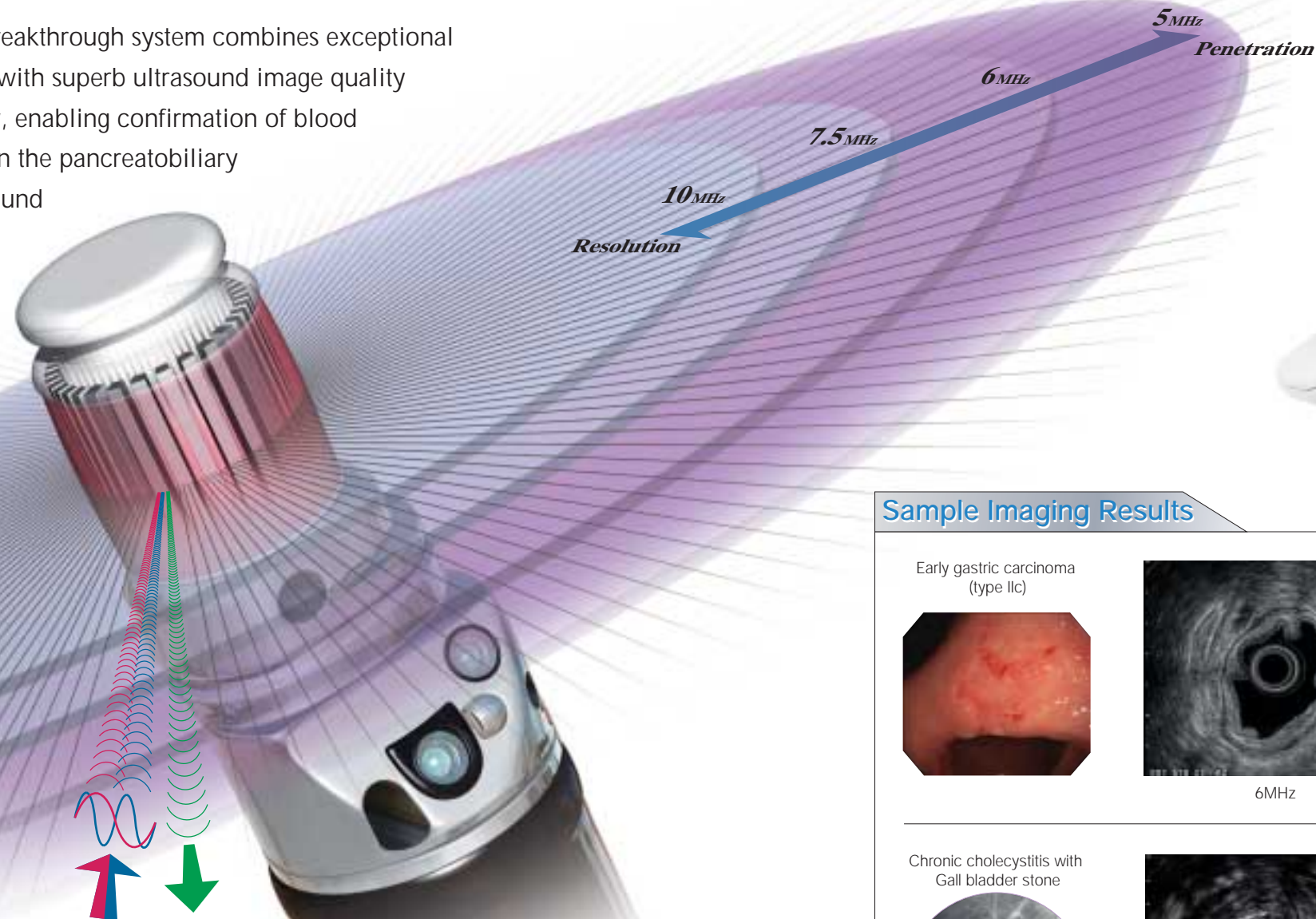


Superb Ultrasound Image Quality And Exceptional Scope Maneuverability

Expanding the potential of EUS, this breakthrough system combines exceptional scope capability and maneuverability with superb ultrasound image quality and advanced ultrasound functionality, enabling confirmation of blood flow conditions for easier orientation in the pancreatobiliary region and providing improved ultrasound image quality for enhanced diagnostic capability

4-step frequency selection for near-field and far-field observation
This frequency range is excellent for penetrating deep tissue.

Expanding the potential of EUS, this breakthrough system combines exceptional scope capability and maneuverability with superb ultrasound image quality and advanced ultrasound functionality, enabling confirmation of blood flow conditions for easier orientation in the pancreatobiliary region and providing improved ultrasound image quality for enhanced diagnostic capability



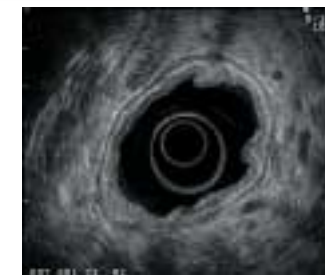
Tissue Harmonic Echo (THE) is a technique that detects only the 2nd harmonic for improved imaging, enabling you to view a noise-free image with improved spatial and contrast resolution.

Each transducer element transmits and receives ultrasound waves. Superior resolution is achieved at this frequency.



Sample Imaging Results

Early gastric carcinoma (type IIc)



6MHz

7.5MHz

10MHz

Chronic cholecystitis with Gall bladder stone



5MHz Fundamental image

THE 5.0R mode image

Color Doppler image

ULTRASONIC GASTROVIDEOSCOPE

OLYMPUS GF TYPE UE160-AL5

Unprecedented scope maneuverability and high-quality imaging capability with a convenient lens cleaning function

Features/Benefits

- Easier orientation in the pancreatobiliary region with 360° electronic radial scanning and image rotation capability
- High-quality ultrasound images with 4 selectable frequencies
- Superb scope maneuverability, made possible by a wide angulation range (130° up, 90° down/right/left), to facilitate the approach to the duodenal bulb
- Tissue Harmonic Echo (THE) for improved spatial and contrast resolution
- Color and Power Doppler for effective confirmation of blood flow
- Lens cleaning function to keep the endoscopic field of view clear at all times

Aloka Diagnostic Ultrasound Systems

ProSound SSD-α5/SSD-5000

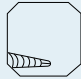
Delivering premium imaging performance, superior functionality and proven reliability

Aloka's ProSound technology is widely recognized for its ability to provide optimum ultrasound imaging performance, making it ideal for EUS. When combined with Olympus's GF-UE160-AL5 endoscope, the result is a EUS platform that delivers accurate, comprehensive imaging. Using a variety of state-of-the-art technologies such as THE, Aloka's ProSound system offers unparalleled views of internal structures.

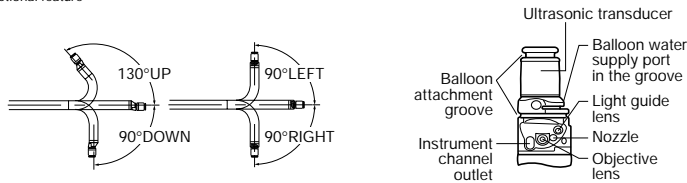
Features

- Preeminent Imaging Performance
- Tissue Harmonic Echo (THE)
- Quad-Frequency Imaging (4-Step Multi-Frequency Imaging)
- Dual Dynamic Display (DDD)
- Storage & Networking
- DICOM Network

■ Specifications

Endoscopic Functions	Optical System	Field of View	100°
		Direction of View	55° Forward-Oblique
		Depth of Field	3 to 100 mm
	Insertion Tube	Distal End Outer Diameter	ø 13.8 mm
		Insertion Tube Outer Diameter	ø 11.8 mm
		Working Length	1250 mm
	Instrument Channel	Channel Inner Diameter	ø 2.2 mm
		Minimum Visible Distance	3mm
		Direction from Which Endo-Therapy Accessories Enter and Exit the Endoscopic Image	
	Bending Range	Angulation Range	UP130°, DOWN90° RIGHT90°, LEFT90°
Total Length	1555mm		
Lens Cleaning Function	Available		
Ultrasonic Functions	Display Mode	B-mode, M-mode, D-mode, Flow-mode, Powerflow-mode	
	Scanning Method	Electronic Radial Array	
	Scanning Direction	Perpendicular to Insertion Direction	
	Frequency	5/6/7.5/10 MHz	
	Tissue Harmonic Echo *	3.75S/3.75P/5.0R/5.0H	
	Focusing Point	A maximum of 4 focusing points are available.(between F1 and F16)	
	Scanning Range	360°	
	Contacting Method	Balloon Method Sterile De-aerated Water Immersion Method	
	Image Rotation	Available	

* Optional feature



Specifications, design and accessories are subject to change without any notice or obligation on the part of the manufacturer.

OLYMPUS[®]

OLYMPUS MEDICAL SYSTEMS CORP.
Shinjuku Monolith, 3-1 Nishi-Shinjuku 2-chome, Shinjuku-ku, Tokyo 163-0914, Japan
OLYMPUS MEDICAL SYSTEMS EUROPA GMBH
Postfach 10 49 08, 20034 Hamburg / Wendenstrasse 14-18, 20097 Hamburg, Germany
OLYMPUS AMERICA INC.
2 Corporate Center Drive, Melville, N.Y. 11747-3157, U.S.A.
OLYMPUS LATIN AMERICA, INC.
6100 Blue Lagoon Drive, Suite 390 Miami, Florida 33126-2087, U.S.A
KEYMED LTD.
Keymed House, Stock Road, Southend-on-Sea, Essex SS2 5QH, England

OLYMPUS SINGAPORE PTE LTD.
491B River Valley Road #12-01/04, Valley Point Office Tower, Singapore 248373
OLYMPUS HONG KONG AND CHINA LIMITED
Room 1520-1527, Ocean Centre, 5 Canton Road, Tsimshatsui, Kowloon, Hong Kong
OLYMPUS (BEIJING) SALES & SERVICE CO., LTD.
Room:1401, East Tower, Gong Yuan No.6 Royal Palace, No.6 Gong Yuan Xile, JianGuoMenNei, DongCheng District, Beijing, 100005, China
OLYMPUS MOSCOW LIMITED LIABILITY COMPANY
117071, Moscow, Malaya Kaluzhskaya 13, bld. 1, fl.2, Russia
OLYMPUS AUSTRALIA PTY LTD
31 Gilby Road, Mount Waverley, VIC., 3149, Australia

www.olympus.com

Printed in Japan F1122SB-0605