

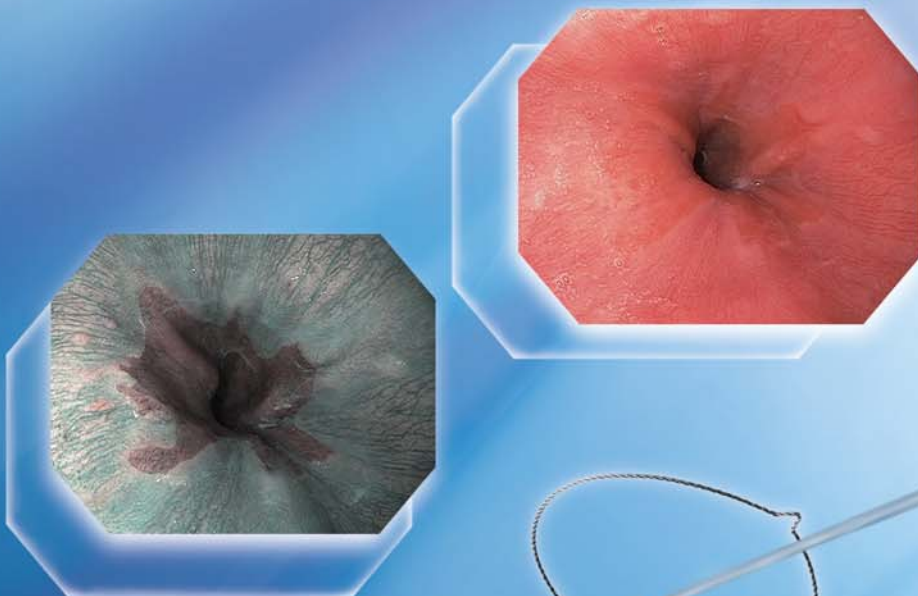
OLYMPUS[®]

Your Vision, Our Future

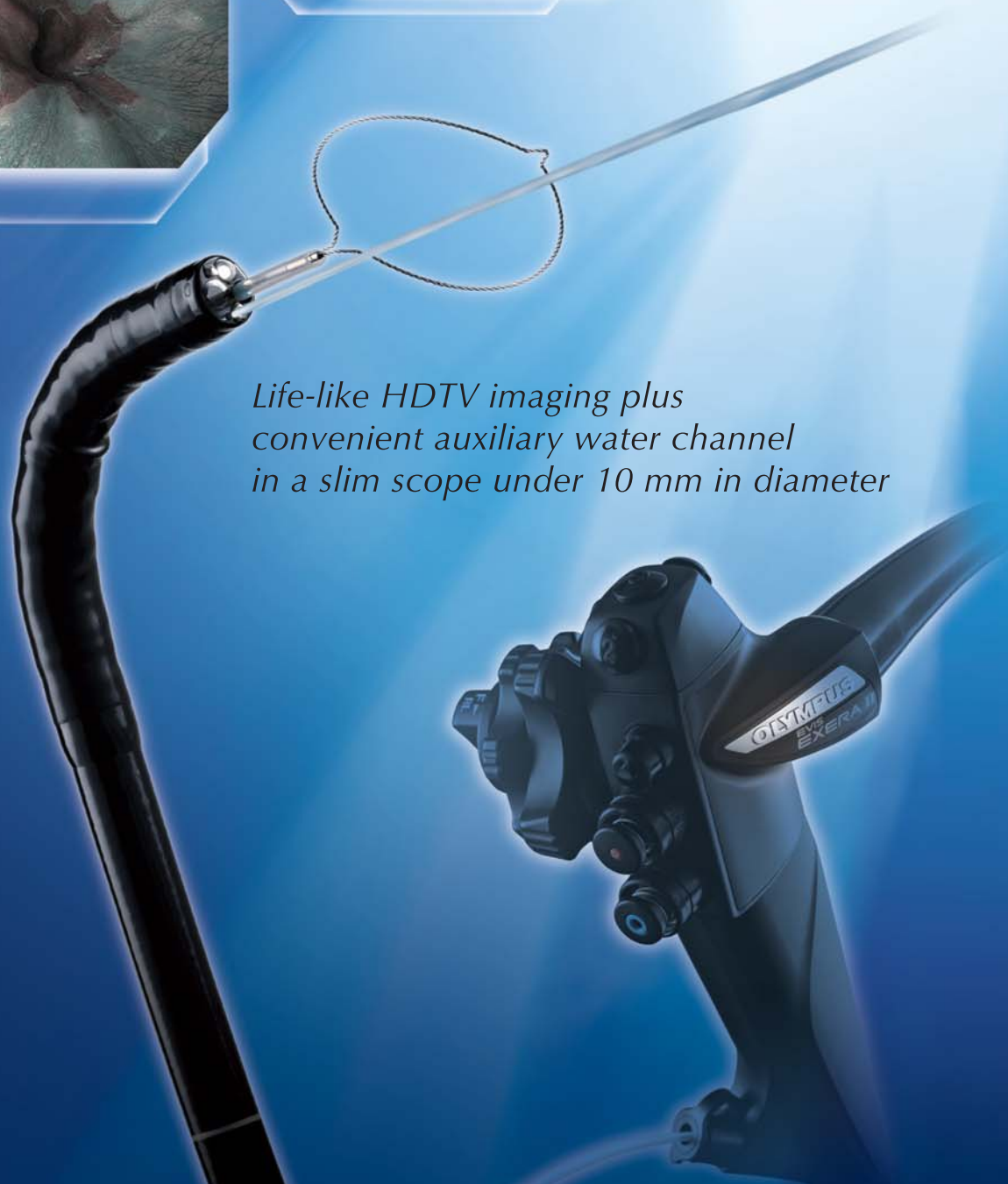
EVIS EXERA II™ GASTROINTESTINAL VIDEOSCOPE

OLYMPUS GIF TYPE H180J

EVIS
EXERA II™

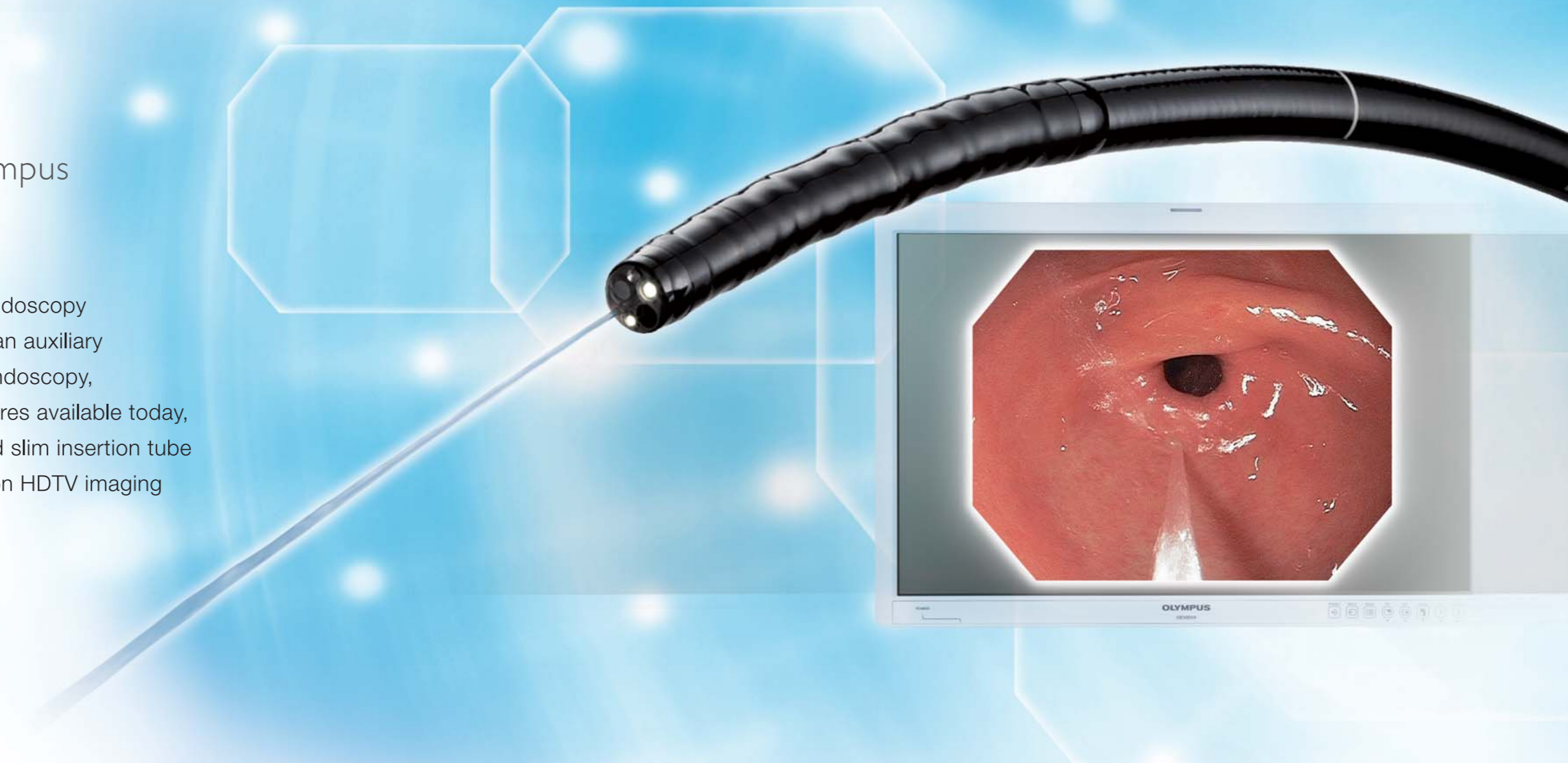


*Life-like HDTV imaging plus
convenient auxiliary water channel
in a slim scope under 10 mm in diameter*



Experience the best performance in routine upper gastrointestinal endoscopy available today from Olympus

Now you can perform routine upper gastrointestinal endoscopy with the added clarity of HDTV imaging supported by an auxiliary water jet function. Setting a new standard in routine endoscopy, this scope incorporates all of the most advanced features available today, ranging from its convenient auxiliary water channel and slim insertion tube measuring just 9.9 mm in diameter to its high-resolution HDTV imaging with NBI capability and Close Focus.



■ Auxiliary water jet function to maintain a clear view

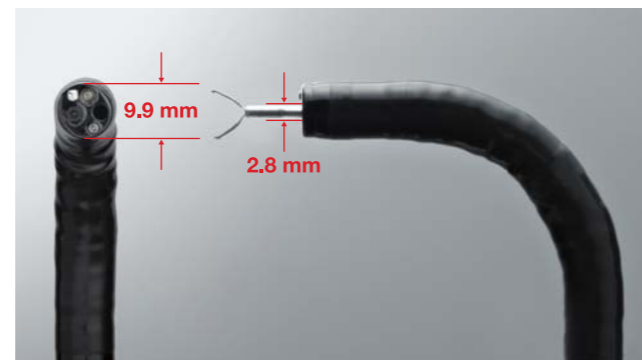
Not only is the GIF-H180J compatible with HDTV, it is equipped with an auxiliary water channel that flushes blood and mucus away from the site under observation. Useful for washing the bleeding point during treatment, this function can be combined with the optional OFP Flushing Pump for even faster irrigation of water.



OFP Flushing Pump

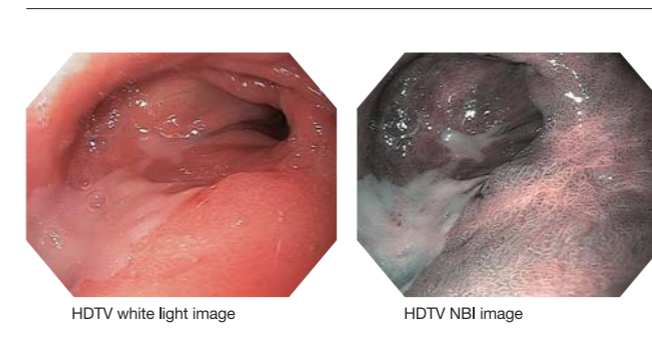
■ Slim on the outside with plenty of room on the inside

To ensure smooth insertion, the outside diameter of the GIF-H180J is under 10 mm, measuring just 9.9 mm both at the distal end and insertion tube. Inside, it boasts a 2.8 mm diameter instrument channel wide enough to accommodate various EndoTherapy devices.



■ HDTV compatibility and NBI capability

The GIF-H180J incorporates an HDTV-compatible CCD to deliver the clear, sharp images with the detail you need for accurate diagnosis and treatment. Narrow Band Imaging™ capability is also available, giving you even more observation flexibility. Combining NBI with the exceptional HDTV image quality maximizes the visibility of microvessels and delicate tissue structures.

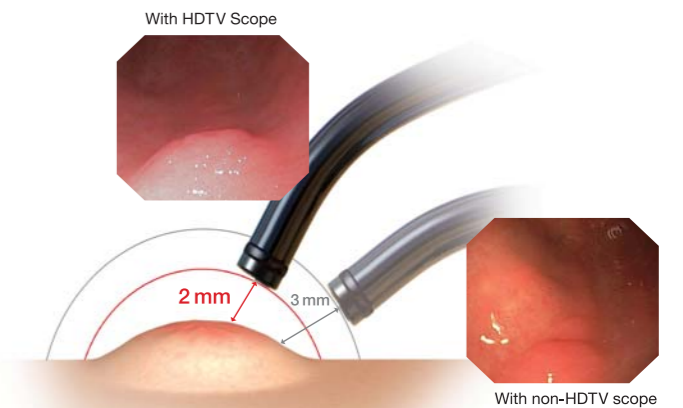


HDTV white light image

HDTV NBI image

■ Close Focus for detailed observation

A close-up image can be obtained simply by moving the scope tip close to the site (as close as 2 mm). The combination of the HDTV-compatible CCD's enhanced imaging with the optical system's extended depth of field ensures that focus remains clear and sharp, with no need for electronic magnification.



With HDTV Scope

With non-HDTV scope

Main Features

- HDTV-compatible CCD chip delivers the sharpest possible images to help physicians provide accurate screenings and diagnoses.
- Close Focus for detailed observation without electronic magnification.
- Narrow Band Imaging™ combined with HDTV and Close Focus enhances observation of capillary and mucosal structures.
- Auxiliary water channel flushes out blood and mucus inside the upper gastrointestinal tract, helping to ensure a clear view at all times.
- Slim design with a 9.9 mm diameter distal end and insertion tube for excellent insertion capability.
- A wide range of instruments can be used with the 2.8 mm diameter channel.
- 4-way angulation (210° up, 90° down, and 100° right/left) enables comprehensive examination of the upper gastrointestinal tract.
- Extra-wide 140° field of view enables observation of a wide area.
- Ergonomically designed grip enhances scope maneuverability, while easy-to-access knobs and user-selectable switches improve operability.
- Fully compatible with the CV-180.


- Scope ID function stores individual scope information in the built-in memory chip and displays it on the monitor, facilitating endoscopy suite management.

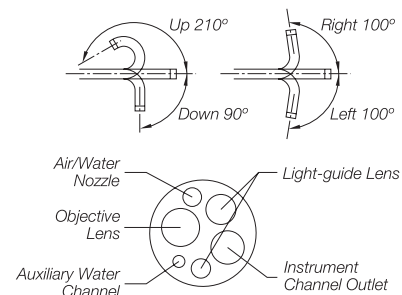


Start-up display



Specifications

Optical System	Field of view	140°
	Direction of view	Forward viewing
	Depth of field	2 to 100 mm
Distal End	Outer diameter	9.9 mm
Insertion Tube	Outer diameter	9.9 mm
Bending Section	Angulation range	Up 210°, Down 90°, Right 100°, Left 100°
Working Length		1,030 mm
Total Length		1,345 mm
Instrument Channel	Inner diameter	2.8 mm
	Minimum visible distance	3 mm from the distal end
	Endotherapy accessory entrance/exit position in field of view 	



Specifications, design and accessories are subject to change without any notice or obligation on the part of the manufacturer.