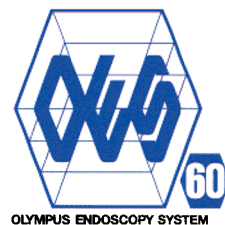


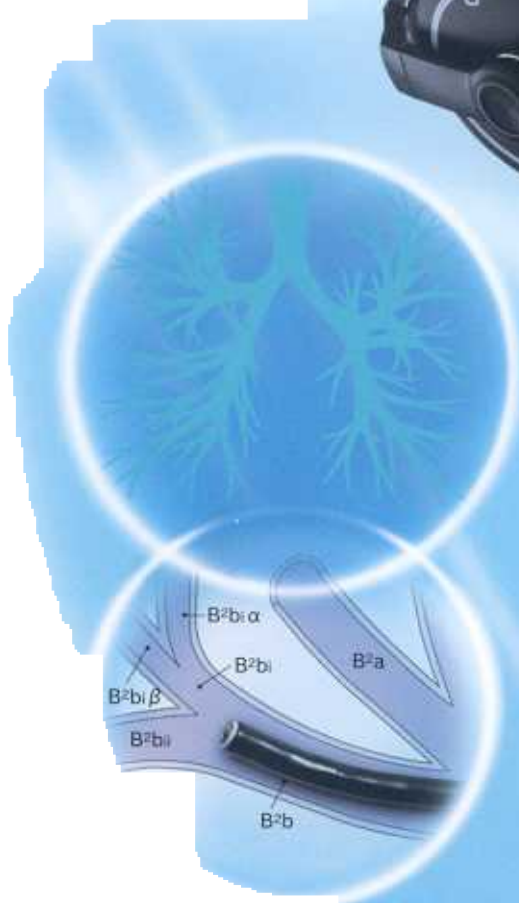
**OLYMPUS**<sup>®</sup>

Your Vision, Our Future



OES Bronchofiberscope  
**OLYMPUS BF TYPE P60**

Versatile scope with improved image  
quality ideal for routine use



# OLYMPUS BF TYPE P60



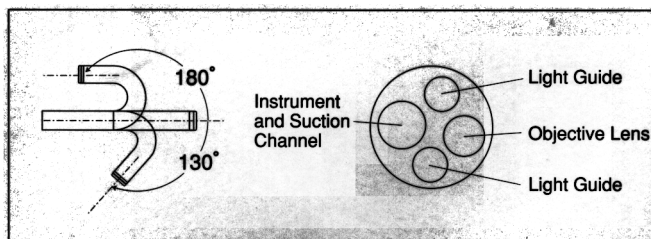
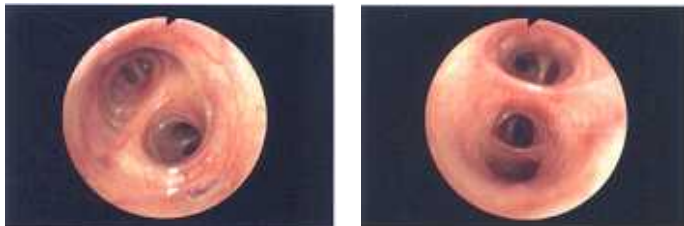
Significant improvements in image quality make this versatile scope ideal for routine applications



- Incorporates more image guide fibers than its predecessor, significantly improving image quality and making this scope suitable for a wide range of routine applications.
- 4.9 mm distal end diameter, 5.0 mm insertion tube diameter, and 2.2 mm channel diameter.
- Wide 120° field of view enables accurate observation of a wider area.
- 180° up/130° down angulation for easier maneuvering in the bronchi.
- 600 mm working length ideal for use in the tracheobronchial tree.
- High-frequency electro-surgical devices can be used with this endoscope.
- Compatible with both OES and EVIS video systems.

### Specifications

Optical System	Field of view	120°
	Direction of view	Up/Down
	Field of view	120°
Insertion Tube	Insertion tube outer diameter	5.0mm
	Working length	600mm
	Channel inner diameter	2.2mm
Instrument Channel	Minimum visible distance	5mm from distal end
	Angulation range	Up180°, Down130°



Specifications, design and accessories are subject to change without any notice or obligation on the part of the manufacturer.

**OLYMPUS**<sup>®</sup>

**OLYMPUS CORPORATION**  
Shinjuku Monolith, 3-1 Nishi-Shinjuku 2-chome, Shinjuku-ku, Tokyo 163-0914, Japan  
**OLYMPUS WINTER & IBE GMBH**  
Kuelstrasse 61, 22045 Hamburg, Germany  
**OLYMPUS EUROPA GMBH**  
Postfach 10 49 08, 20034 Hamburg / Wendenstrasse 14-18, 20097 Hamburg, Germany  
**OLYMPUS AMERICA INC.**  
2 Corporate Center Drive, Melville, N.Y. 11747-3157, U.S.A.  
**OLYMPUS LATIN AMERICA, INC.**  
6100 Blue Lagoon Drive, Suite 390 Miami, Florida 33126-2067, U.S.A.  
**KEYMED LTD.**  
Keymed House, Stock Road, Southend-on-Sea, Essex SS2 5QH, England

**OLYMPUS SINGAPORE PTE LTD.**  
491B River Valley Road #12-01/04, Valley Point Office Tower, Singapore 246873  
**OLYMPUS HONG KONG AND CHINA LIMITED**  
Room 1520-1527, Ocean Centre, 5 Canton Road, Tsimshatsui, Kowloon, Hong Kong  
**OLYMPUS BEIJING REPRESENTATIVE OFFICE**  
Room 1401, East Tower, Gong Yuan No6 Royal Palace, No6 Gong YuanXijie, JianGuoMenNei, DongCheng District, Beijing, 100005, China  
**OLYMPUS MOSCOW LIMITED LIABILITY COMPANY**  
117071, Moscow, Malaya Kaluzhskaya 19, bld. 1, fl.2, Russia  
**OLYMPUS AUSTRALIA PTY LTD.**  
31 Gilby Road, Mount Waverley, VIC., 3148, Australia