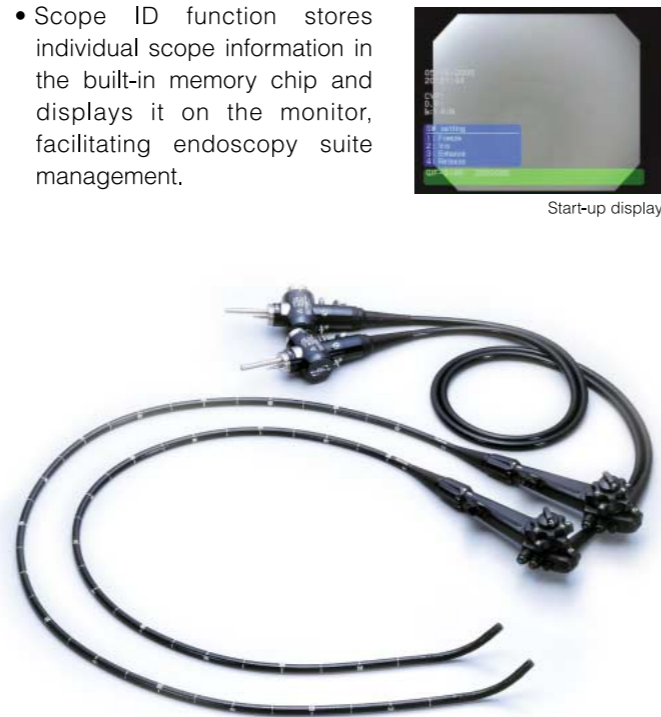




Main Features

- Superb image quality with exceptionally sharp, crisp details and large display size in a slim design measuring 11.3 mm in diameter at the distal end and 11.5 mm in diameter along the insertion tube, instrument channel measures 3.2 mm inner diameter for treatment and suction.
- Auxiliary water jet can be combined a flushing pump, enabling removal of mucus and debris in the colon at the touch of a button on the scope or on the footswitch unit.
- Highly acclaimed Variable Stiffness capability for adjustment of insertion tube flexibility to the patient's anatomy.
- Wide 140° field of view and extensive 4-way angulation (180° up/down and 160° right/left) for superior observation through all contours of the colon.
- Ergonomically designed grip enhances scope maneuverability while easy-to-access controls and user programmable switches improve operability.
- Fully compatible with the CV-160/140.



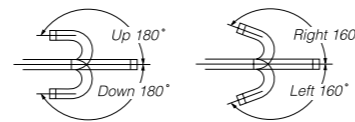
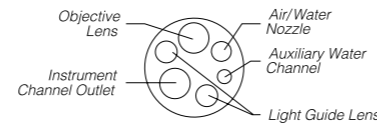
- Scope ID function stores individual scope information in the built-in memory chip and displays it on the monitor, facilitating endoscopy suite management.



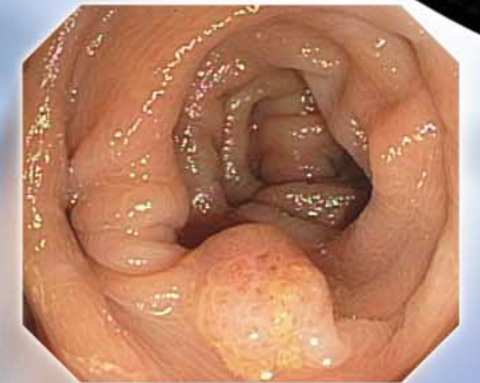
Start-up display

Specifications

Optical System	Field of view	140°
	Direction of view	Forward viewing
	Depth of field	3 to 100 mm
Distal End	Outer diameter	11.3 mm
	Insertion Tube	Outer diameter
Bending Section	Angulation range	Up 180°, Down 180°, Right 160°, Left 160°
Working Length		L:1680 mm, I:1330 mm
Total Length		L:2005 mm, I:1655 mm
Instrument Channel	Inner diameter	3.2 mm
	Minimum visible distance	5 mm from the distal end
	Endo therapy accessory entrance/exit position in field of view	



*Superior performance
from an extra- slim colonoscope*



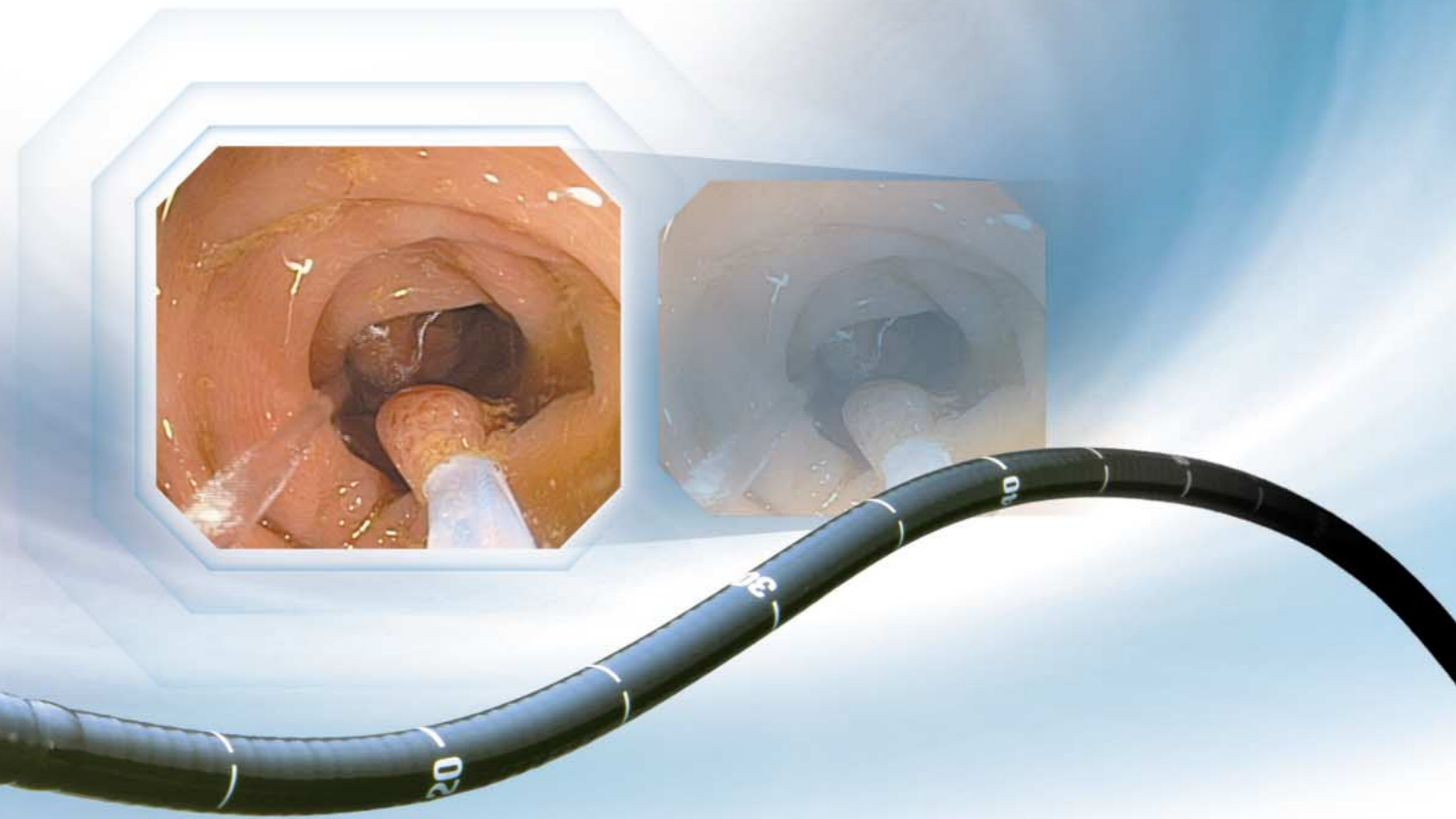
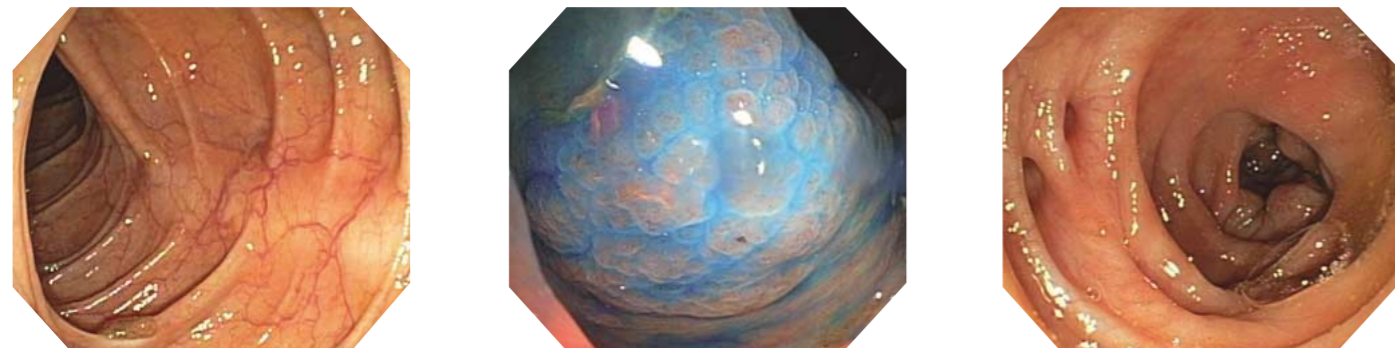
Specifications, design and accessories are subject to change without any notice or obligation on the part of the manufacturer.

This long-awaited slim scope offers enhanced image quality and features a convenient auxiliary water jet for superior viewing at all times

To meet the demands for a slim colonoscope with superior image quality, Olympus introduces the PCF-Q180AL/I. Measuring only 11.3 mm across the distal end and 11.5 mm at the insertion tube, this remarkable scope delivers a level of image quality previously only available on Olympus' flagship instruments. Besides improving the image quality, we also added a convenient auxiliary water jet, making this scope an attractive for many endoscopists.

■ Improved image quality and large image capability

The image quality provided by the PCF-Q180AL/I is remarkable for such a narrow scope. Images are clearer, sharper and displayed in a larger size on the monitor. Even subtle details and textures of the mucosa and fine capillaries inside the colon are rendered with realistic detail.



■ Auxiliary water jet facilitates mucosal cleansing

The PCF-Q180AL/I's independent forward auxiliary water jet makes it easy to keep a clear view at all times. When combined with the dedicated flushing pump, it allows you to remove mucus and debris inside the colon at the touch of a button on the scope or on the footswitch unit. Keeping the view continuously clear ensures effective observation and may increase the diagnostic yield.



■ Olympus-exclusive Variable Stiffness capability

This innovative feature enables you to adjust insertion tube's flexibility to suit the patient's anatomy simply by turning the ring located below the control section.

