

UP-20

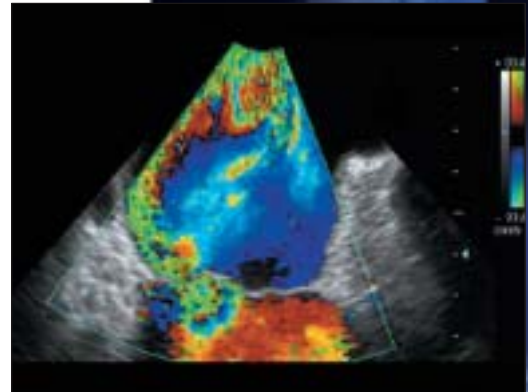
Analog Color A6 Printer

The UP-20 color printer successfully combines high quality with affordable pricing. The UP-20 prints near A6 color images in approximately 16 seconds, (using UPC-21S media). The printer's new compact design allows for easy integration with other video equipment. The UP-20 is an ideal choice for the dental market, as well as, office or scientific lab applications.



UP-20

- Superb Print Quality and Color Reproduction at approximately 400 DPI Resolution
- Compact size
- High-Speed Printing, near A6 Size
- Four Frame Memory
- Versatile Analog Video Inputs and Outputs
- Convenient Remote Control Capability
- RS-232C Interface
- 2 or 4-Split Image Print Mode
- Monitor Loop-Through for System Power Saving
- World Wide Power and Video Capability



UP-20

Specifications

UP-20

Printing Method	Dye Sublimation
Thermal Head	403 DPI
Gradations	256 Gradations, over 16.7M colors per dot
Resolution	403 DPI
Printed Picture Size	NTSC: S Size: Full 3 3/4" x 2 7/8" L Size: Full 5" x 3 5/8"
Print Speed	NTSC: (High Speed Mode) UPC-21S approximately. 16 sec. UPC-21L approximately. 25 sec.
Paper Capacity	S Size tray: Max. 80 sheets L Size tray: Max 50 sheets
Power Consumption	100-120 Volts 1.8 A, 220-240 Volts 1.0A
Dimensions	8 3/8 x 5 x 15 5/8 (inches)
Weight	13.3lbs. (6.5 KG)
Control Terminal	Remote 1 for optional RM5500, RM91 Remote 2 for optional FS-36, FS-20 RS-232C Interface port for external computer
Video Inputs	Composite Video/S-Video
Media	UPC-21L (L size standard color print pack) (4 x 50 packs) UPC-21S (S size standard color print pack) (3 x 80 packs)
Safety Standards	UL 1950 and UL 2601-1, Listed, CSA C22.2 No. 601.1, No. 950, EN60950, EN60601-1
Supplied Accessories	AC Power Cable Instruction Manual Warranty Card Paper Tray (L Size) Printing Media (UPC-21L, 10 prints of paper and ribbon)
Optional Accessories	Printing Media: UPC-21L, UPC-21S Remote Controls: RM91, RM5500 Foot Switch: FS-36, FS-20 Slide Adapter: UPA-21SA



UP-20 Back Panel



UPC-21L Media



UPC-21S Media

SONY

Sony Electronics Inc.
1 Sony Drive, Park Ridge, NJ 07656

www.sony.com/medical

©2002 Sony Electronics Inc. All rights reserved. Reproduction in whole or in part without written permission is prohibited. Features and specifications are subject to change without notice.

All non-metric weights and measures are approximate. Sony is a trademark of Sony.

Caution: Federal (USA) law restricts this device to sale by or on the order of a physician or other appropriately licensed medical professional.

Caution: See product labeling for indications, contraindications, warnings, cautions and directions for use.

ME-UP20